

Annual  
Report 1990/1991

---



Irish Homeless Project

Contents

Chair's Introduction	2
Director's Report	3
Housing Initiatives Project	4
Housing Management	7
Development Report	13
Research Report	17
Finance	18
Management Committee	
Staff Team	20

## Chair's Introduction

---

This last year has been a most important one for CARA Irish Homeless Project. Three new projects opened, Stroud Green Road in October 1990, Barnet in January 1991, and Hilldrop Road in March 1991. We have had some turnover of staff and I would particularly like to welcome Mark Robinson (Director), Seamus Kelleher (Development Manager), Barry Butler (Project Manager), and Mari Stackpoole (Project Manager).

As usual the financial framework for Special Needs Housing caused great concern. The problems for London Boroughs Grants Scheme in setting a budget and the forthcoming changes to Hostel Deficit Grant make financial planning extremely difficult and the future of this most vital sector of the social housing movement must be made more secure.

CARA was set up in 1984 to provide decent secure housing for single Irish people who were severely disadvantaged by the housing market in London. Over the past seven years CARA has become a registered housing association and provides 64 bedspaces in ten houses and its housing provision will double in size over the next eighteen months. This is a great achievement, but the needs of the Community it was set up to serve have not diminished, in fact, they have increased.

CARA will continue to serve those in the greatest need of housing, providing a safe and stable home for those for whom there is no alternative.

I would wish to thank and commend all our Project Managers for their continuous good work with and for single Irish homeless people.

I welcome the Housing Corporation's most helpful and supportive monitoring visit. I would wish to thank Liz Firth our Monitoring Officer for her complimentary comments and constructive advice.

The Housing Initiatives Project funded by the Irish Government, through its advisory committee DION, lead by William Miller of CARA, has proved to be a great success in raising the consciousness of the Irish Experience of Homelessness in London and attracting firm responses from Housing Agencies. Such agencies are to be thanked for responding in such a forthright manner.

CARA is expanding and will continue to expand in order to meet the needs of Irish single homeless people and through the work of its Housing Initiatives Project ensure that other housing providers make available more homes.

I would like to thank my longstanding colleagues on the Board of CARA, and our new voluntary Directors, Christine Arthur, Sally Costello, and Tom Woodhouse, for their generous contribution to the continued growth and development of CARA.

It has been an exciting year and though the financial climate is, as always, gloomy we all look forward to 1992 with a great deal of hope.

Gearoid O'Meachair



I took over as Director of CARA in October 1990 and on my first day was immersed in the official opening of the new house in Stroud Green Road. A hectic first day!

Since then the pace has increased. CARA is increasing in size dramatically in both the number of houses in development and management and the staff employed to deal with them. These changes mean that Management Committee and staff have to work together with our partner housing associations and the Housing Corporation to meet the challenges involved. I must use this opportunity to thank the Management Committee and all the members of staff for their efforts.

The forthcoming changes to the Hostel Deficit Grant system, the transition to Special Needs Management Allowance, will have an, as yet unquantifiable, effect on CARA's finances. The continuing need for topping-up finance places a great strain on all special needs housing bodies and CARA is no exception. I would like to thank the London Boroughs Grants Committee for their continuing support as well as the London Boroughs of Hammersmith and Fulham, and Haringey. Without their grant aid CARA would not be the thriving organisation it is.

Since registration with the Housing Corporation as a housing association in 1988 CARA has received allocations totalling £1.1 million. This money will be spent next year (1991/92) and by the end of the year CARA will own its own houses.

In the years ahead, under the new capital funding regime for housing associations brought in by the 1988 Housing Act, financial viability will be increasingly important for the continued growth of an association. It is extremely gratifying that the Housing Corporation are continuing to support CARA in its work with single homeless Irish people. The monitoring visit during the year provided CARA with an opportunity to evaluate its policies and procedures and this valuable exercise will stand the organisation in good stead in the rapid period of expansion ahead.

Mark Robinson



## Housing Initiatives Project

Many Irish people continue to face a particular problem of homelessness in London.

Disproportionate numbers of Irish single people are trapped in a cycle of hostel living and homelessness without access to suitable permanent accommodation.

The Housing Initiatives Project is aimed at facilitating increased access for homeless Irish single people into secure, permanent and suitable housing. The project, based in CARA, is funded by the Irish Government's allocation for emigrant welfare services.

### Providing Information

Collecting information on Irish single homelessness is an on-going process involving a wide range of sources. The project informs housing agencies about Irish single homelessness, the Irish experience of homelessness and the activities of Irish voluntary

agencies working with Irish homeless people.

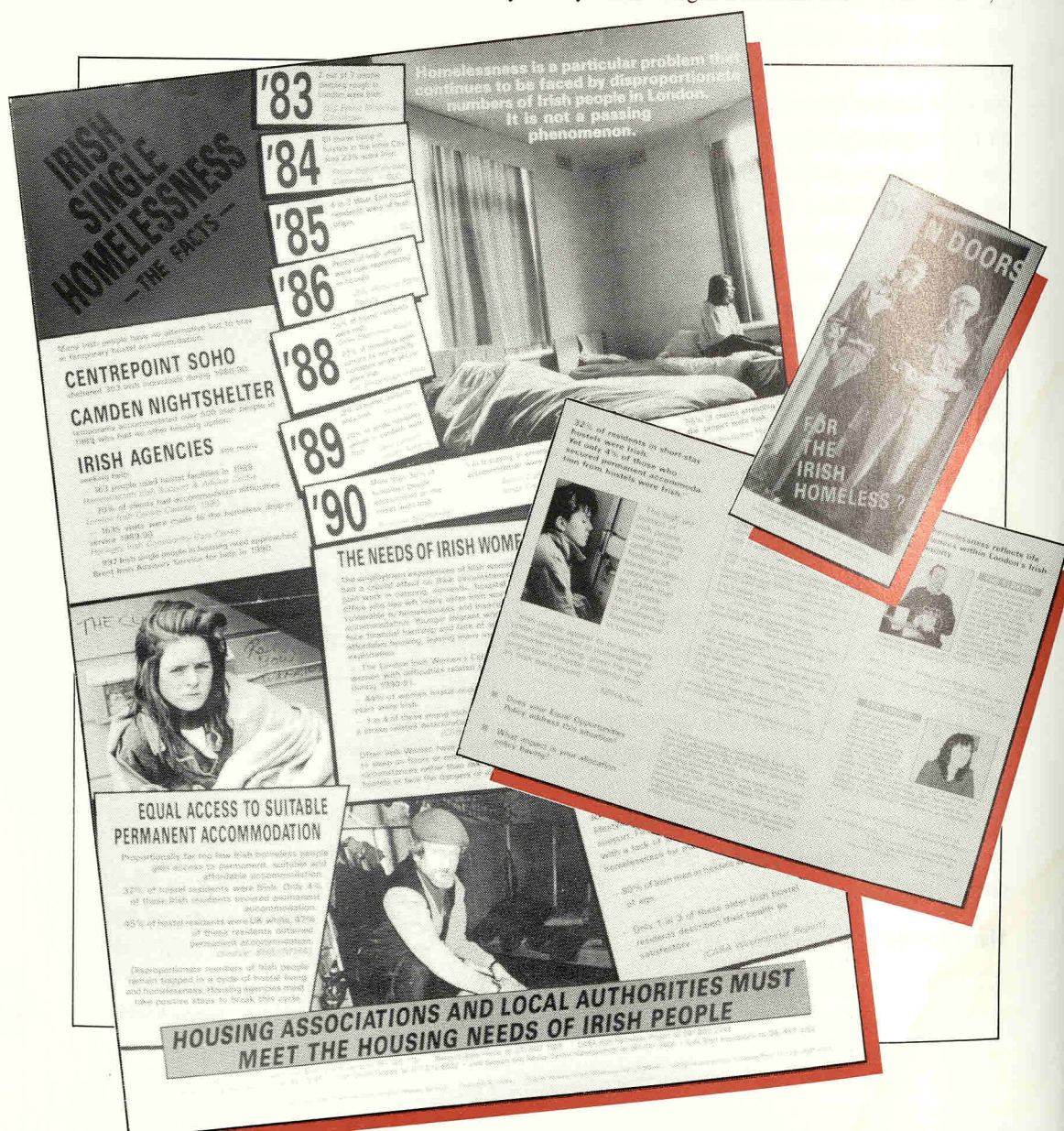
### Publicity and Heightened Profile

Disproportionate numbers of Irish people will continue to face homelessness unless positive action is taken by London's housing agencies.

To get this message across, the project has produced material devised to highlight the issue. "Open Doors for the Irish Homeless?" is an information leaflet aimed at housing providers. The official launch of the leaflet in February at Westminster signalled the start of a drive to publicise the needs of Irish single homeless people.

Speakers in support of the launch included Nicholas Scott MP, Clive Soley MP, and Lorna Reith of CHAR. The event received widespread coverage in the housing media.

The information leaflet has been followed up by "Irish Single Homelessness — The Facts", a





## Housing Initiatives Project



L to R

William Miller *Housing Initiative Worker*, Nicholas Scott MP *Minister of Social Security*, Gearoid O'Meachair *Chair CARA*, Lorna Reith *CHAR*, Clive Soley MP *Shadow Housing Minister*

poster distributed to London Housing Associations and Local Authorities.

### Housing Agencies Policy and Practice

The project has also been involved in the gathering of information on the policy and practice of housing agencies toward Irish single people in housing need, identifying what provision (if any) is currently being made for this client group.

This material will prove a further useful resource for those working on behalf of Irish homeless people. A report on the findings of this work is in the pipeline.

### An Irish Dimension to the Work of Coordinating Groups

A wide range of groups are active in devising strategic approaches to homelessness. A productive and continued input is maintained to ensure an Irish dimension exists in terms of the work carried out by such agencies.

Particular emphasis has been placed on those groups promoting strategies aimed at improving housing provision for ethnic groups.

### Response to the Project

The effect of the project in a short time has

The launch of 'Open doors for the Irish Homeless?' at Westminster



Housing Initiatives project — providing information

## Housing Initiatives Project

---

been to heighten awareness amongst housing providers of the needs of Irish homeless people.

This impact is now leading to increased provision. Responses from housing associations range from individual 'one off' offers of accommodation units, to initiating plans to develop joint projects to meet the specific needs of Irish people.

A number of housing associations are now in negotiation with CARA to develop new schemes as a direct result of the initiative. Other agencies have come forward with proposals to take referrals from Irish agencies in their area.

As a direct result of the information they have received on Irish homelessness, housing associations and local authorities are having to consider how their monitoring and referral systems impact upon the situation of Irish homeless people.

### Future Developments

---

Although results are beginning to come through in the form of increased provision, the scale of the problem means much remains to be done and further positive action is required by London's housing agencies.

The project aims to continue the compilation of information highlighting the housing needs and experiences of Irish single homeless people in Britain. This material is necessary to encourage housing agencies to initiate and achieve practical commitments to meeting the housing needs of Irish people.

Thanks to the many organizations who actively supported the project and in particular the following agencies for their positive responses which are leading to increased access to housing for Irish single homeless people.

Carr-Gomm Society  
Circle 33 Housing Trust  
Community Housing Association  
East London H.A.  
Family Housing Association  
Habinteg Housing Association  
Islington and Shoreditch H.A.  
Kensington Housing Trust  
Lee Housing Association  
London and Quadrant Housing Trust  
Metropolitan Housing Trust  
New Islington and Hackney H.A.

Notting Hill Housing Trust  
Paddington Churches H.A.  
Patchwork Community  
The Richmond Fellowship  
Sanctuary Housing Association  
Servite Houses  
Sutton Housing Society  
Threshold  
United Kingdom Housing Trust

William Miller  
*Housing Initiatives Officer*



### Barnet Houses

The Barnet Scheme, which is the first in the Borough, consists of two shared houses for single homeless men between the ages of 30-60 years. Both houses have been developed by Metropolitan Housing Trust for CARA.

The first house is situated at West Hendon Broadway and consists of two floors above a shop. The house consists of five self contained

bedrooms, a shared large dining/sitting room/kitchen and shared laundry facilities.

The second house is situated at Station Road, a five minute walk from the Broadway. This has six self contained rooms, all with their own controlled entry system, two shared kitchens and a nicely laid out back garden. Both houses have been completed to a high standard with double glazing in all windows. They are

Residents at CARA's Barnet scheme



Station Rd Barnet



within a five minute walk of the Hendon Thameslink and a ten minute walk to Hendon Central Station.

Both houses were officially opened on 14th February this year, by Mr. Andrew O'Rourke, the Irish Ambassador to Britain.

There has been no problem in filling the houses. Initially a number of referrals from Central London agencies felt Barnet was too far out and were apprehensive about coming out this far. However, this was more than compensated for by the large number of referrals who were anxious to be out in the suburbs. I also found that as many of our residents were visited by friends, who were homeless, they subsequently expressed a wish to referral agencies that they too would like to come to a CARA house.

Since the two houses opened, four residents have moved on. One to independent living; one to CARA's shared independent accommodation in Hilddrop Road; one left as he has an active drink problem which he was unable to control, but still keeps in contact; and one resident took up residence for a few days, but left and did not come back.

Perhaps the greatest problem facing us in the future in this particular area is lack of move-on accommodation, as the housing waiting list in the Borough has increased from 1,000 people five years ago to around 10,000 today. However, there is a very active group in the Borough — Barnet Action for Single Homeless — which meets monthly and is campaigning for increased housing facilities for single homeless people.

Barry Butler  
*Project Manager*

### **Bardolph Road Islington**

---

The Bardolph Road scheme is located in the London Borough of Islington and accommodates eight men between the ages of 30 and 60 years. It has been open for four years now. The house continues to accommodate men with a range of needs including mental health and alcohol related problems.



The Irish Minister for Labour, Bertie Ahern T.D. visits Bardolph Road

The house offers the tenants their own bedroom and access to fully equipped kitchen, communal area and laundry. All residents are assured tenants.

Most of the men coming to the project do so to eventually secure their own independent accommodation. However, some have no such aspiration and find the prospect of independent living a lonely and difficult one, and feel they do not have the personal resources to maintain it.

During the year five men left the house; four moved to independent accommodation and one returned to Ireland. Two men were rehoused by Islington and Shoreditch Housing Association, and two men were rehoused via Homes nominations to Thames Housing Association and Camden Council.

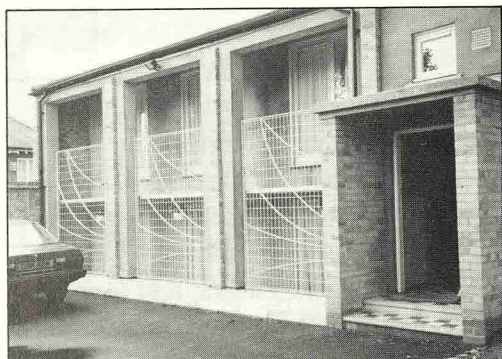
Don Magee  
*Project Manager*



### Craven Park Road Haringey

Craven Park Housing Project is in the borough of Haringey and is very close to Stamford Hill Broadway.

It consists of six self-contained bedsits on two levels with a central courtyard and an adjoining warden's bungalow. There is also the potential for the development of a two person shared flat within this scheme.



This accommodation is for young women between the ages of 18 and 30 and the anticipated length of stay is 12 to 18 months. This length of time, we feel, provides a period of support in a secure environment which allows the women the opportunity to establish themselves, seek employment or further training



Inside Craven Park Road

and to prepare them for living independently in the community.

Throughout the year four women have successfully been resettled in their own secure self-contained permanent flats; two of these were through Family Housing Association, one through Haringey Council and one via a "one-off" offer from Circle 33 Housing Trust.

Mary Boyle  
Project Manager

### Southerton Road, Hammersmith

The Southerton Road project is CARA's first in Hammersmith and the first such project for older Irish men in the Borough. It was funded by the Housing Corporation and developed for CARA by Notting Hill Housing Trust. The project is at 4 Southerton Road, W6 and is just off King Street, and is adjacent to all amenities, including 'The tube'. It consists of 6 single bedrooms and 2 communal kitchen/diners in a fully furnished terraced house on two levels plus basement. There are ample bathroom and laundry facilities.

There is an office with one full time worker, offering access to advice and information on a range of practical issues as well as help with



The Southerton Road House

more personal support needs. Support is offered within an ethos which is positive to Irish culture and traditions.

Length of stay at the project should be between 12 and 18 months, with various options for move-on being discussed with individual residents, subject to availability.

Three residents left during the year: one choosing to return to Ireland; another left because his stay here raised too many issues for



him to deal with; and another left without notice.

Tony Nolan  
*Project Manager*

### **Victoria/Woodstock Schemes Haringey**

---

The Victoria Terrace/Woodstock Road scheme (owned by Circle 33) consists of two separate houses located in adjacent streets, near Finsbury Park, Haringey. Victoria Terrace is for four women, aged between 18 and 25 years and consists of four large bedsits. Each bedsit has a bedsitting room with a separate kitchen. Bathroom facilities are shared between two residents on either floor. Woodstock Road is for four men, and consists of a ground floor self-contained unit for a "responsible" resident, aged between 26 and 30 years. On the other two floors there are shared facilities for 3 men aged between 18 and 25 years. All men have their own bedroom.

Move-on initially was very slow, much to the frustration of the residents. In Victoria Terrace three women moved on to their own self contained permanent accommodation — two through the HOMES scheme (formerly known as LAMS) and one through Circle 33 H.T. Woodstock Road experienced some teething problems in terms of residents deciding not to

remain in London. Six in all moved on — three left to return to Ireland, and three were resettled, two through HOMES and one through CARA's quota with Haringey Council.

Of those residents who were successfully resettled through the various move-on schemes, the majority still maintain contact with the Scheme.

Ann McCarney  
*Project Manager*

### **Stroud Green Road Haringey**

---

This is CARA's third scheme in the London Borough of Haringey and is funded by the Housing Corporation. It was developed for CARA by London and Quadrant Housing Trust and provides a very high standard of accommodation for eight men, aged from 30-60 years. Each resident has their own bedroom and shares either one of two communal kitchens and bathroom, a living room and back garden.

Most of the referrals made to the Stroud Green Road project come from Irish agencies.

The project has been in management since the scheme was officially opened on 29th October 1990.

Mari Stackpoole  
*Project Manager*

The opening of Stroud Green Road.



From L to R  
Nicholas Scott MP *Minister for Social Security*  
Sr. Joan Kane *Secretary CARA*

Mari Stackpoole *Project Manager*  
Irish Ambassador to Britain Mr Andrew O'Rourke



### Amhurst Road Hackney

The project houses seven men aged between 30 and 60 years. It is owned by New Islington Housing Association and has been open for four years. The Project provides a safe and secure environment in which individuals can regain confidence and independence enabling most residents to move on to their own accommodation. We wish to thank New Islington Housing Association for their invaluable help with resettlement.

### Hilldrop Road Islington

This scheme is the most recent addition to CARA's projects. Owned by Circle 33 Housing Trust, it provides housing for ten people. The house has four bedsits and two three bedroomed flats. The house is intended as permanent housing and is CARA's first such scheme. We would like to thank the London Borough of Islington for their help in making the scheme



possible and particularly Councillor Margaret Hodge for officially opening the house.

Mark Robinson  
Director

The opening of Hilldrop Road  
L to R Margaret Hodge — *Leader of Islington Council*  
Dave Smith — *Circle 33 Housing Trust*  
Brendan O Caollai — *Irish Embassy*  
Gearoid O'Meachair — *Chair CARA*

BOROUGH	NO. OF RESIDENTS	PROJECT MANAGERS
BARNET		
58 Station Rd. NW4	6 men	Barry Butler
203 W. Hendon NW7	5 men	
HACKNEY		
140 Amhurst Rd. E8	7 men	Jack Hynes
HARINGEY		
1 Craven Pk. N15	6 women	Mary Boyle
70 Stroud Gr. N4	8 men	Mari Stackpoole
7 Victoria Tr. N4	4 women	Ann McCarney
107 Woodstock N4	4 men	
HAMMERSMITH		
4 Southern Rd. W6	6 men	Tony Nolan
ISLINGTON		
27 Bardolph Rd. N7	8 men	Don Magee
41 Hilldrop Rd. N7	10 men	
TOTAL	54 MEN	7 PROJECT STAFF
10 SCHEMES	10 WOMEN	



CARA's  
REFERRAL AGENCIES

An Teach	JART
Arlington House	Kings Cross Homeless Project
Barnet Action Housing Campaign	London Irish Centre Camden
Barnet Housing Aid Centre	Irish in Islington Project
Bondway Nightshelter	London Irish Women's Centre
Barons Court Project	The Manna Centre
Centrepont	Passage Day Centre
Central London Housing Advisory Service	Piccadilly Advice Centre
Cricklewood Homeless Project	Providence Row Nightshelter
The Davies Centre Alcohol Project	Riverpoint Nightshelter
DSS Reception Centres, Spur House, Pound Lodge	St Joseph's College Soup Run
Lancelot House	St Martin's in the Field
Finchley Methodist Church Day Centre	St Ursula's Hostel
Hammersmith Housing Aid	Safe Start Foundation
Hammersmith Unemployed Workers Centre	SMA
Haringey Irish Community Care Centre	Spitalfields Crypt
Haringey Alcohol Project	Southwark Day Centre
Holy Ghost Fathers	Tooley Street
Irish to London Project	Victoria House (L.B. Hammersmith and Fulham)
Irish Support and Advice Centre Hammersmith	Local Authority Housing Departments

Bardolph Road, Islington



Amhurst Rd Scheme Hackney



October 1990 was the start of an extremely busy period for CARA. The Stroud Green project was opened by the Minister for Social Security Mr Nicholas Scott M.P. A new Director and Development Manager took up their posts. In January 1992, West Hendon Broadway and Station Rd were opened and quickly followed by the opening of Hilldrop Rd. The latter project is the first to be managed by CARA providing permanent housing.

from our development partners and their officers. We thank everyone for their support.

Seamus Kelleher  
*Development Manager*

### **The Development Programme**

---

CARA now has 64 bed spaces in management, with another scheme providing 5 bedspaces due for completion in December 1991. This scheme at 321 Amhurst Rd will be the first CARA owned project. A further 11 schemes are 'cashed backed' by the Housing Corporation and break down as follows:

7 schemes will go on site towards the end of 1991 providing 37 bed spaces in 1992. Two schemes will go on site in 1992, providing approximately 18 bedspaces.

CARA has also secured two allocations under the Single Homeless Initiative providing ten bedspaces. It is envisaged that these will go on site 1992/3.

Discounting any further allocation secured in the 1991/92 round of bidding, CARA will be managing 21 projects providing 140 bedspaces and will own 7 of these projects.

### **A London Wide Agency**

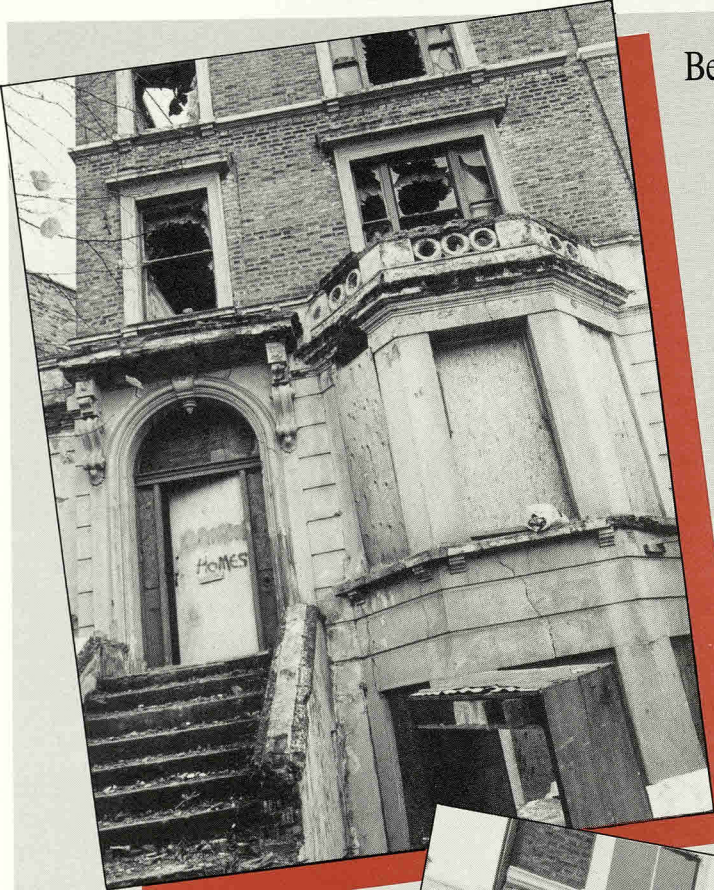
---

After a number of false starts CARA will purchase its first site in Southwark in August 1991. CARA has also been approached by Lewisham Council to develop the council property adjacent to the New Irish Centre in Catford. In addition to our traditional partners, we have been approached and are negotiating with a number of new Associations with a view to developing schemes in the future. Much of the impetus for the new liaisons came from the launch of the Open Doors leaflet and the work of the Housing Initiatives Project.

The efforts to make CARA a London wide agency responding to identified need have only been successful because of the assistance of many local community groups, council officers, councillors and the excellent support we receive



Development of a new CARA scheme at  
Hilldrop Road, Islington.



Before



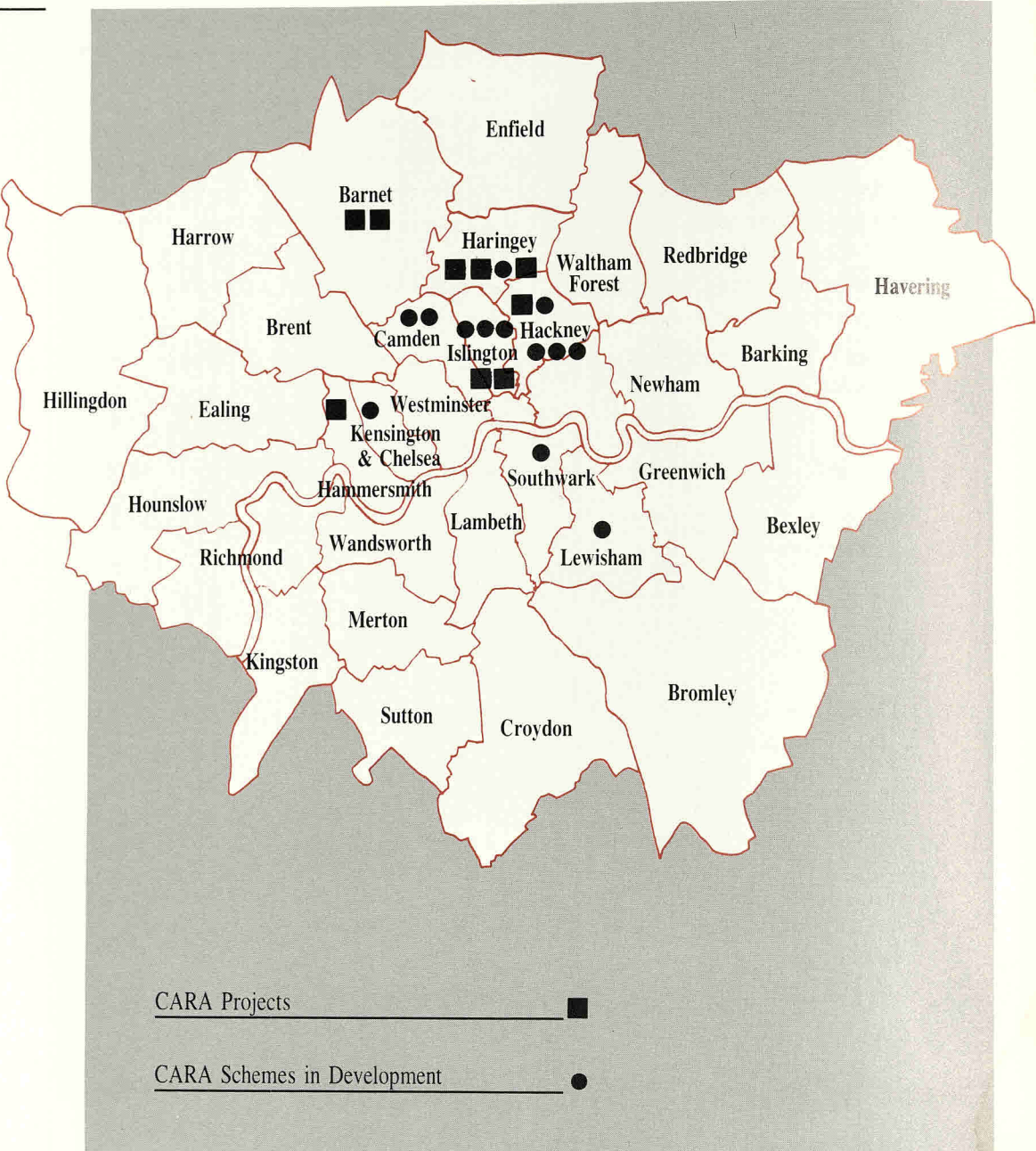
and After



Address	Ownership	Type of Residence	In Management
Balls Pond Rd Islington N1	CARA	6 x 1-bed flats	1991
Horsell Rd Islington N5	CARA	6 person shared accommodation	1992
Amhurst Rd Hackney E8	CARA	2 x 1-bed flats 1 x 3 person sharing	1992
Farleigh Rd Hackney N16	CARA	4 self contained flats	1992
Jamaica Rd Southwark SE1	CARA	6 person shared accommodation	1993
Amhurst Rd Hackney E8	CARA	4 x 1-bed flats	1993
Ellington St Islington N7	Circle 33	3 x 1-bed flats	1992
Woodstock Rd Haringey N4	L & Q	5 person shared accommodation	1992
Pratt St Camden NW1	SPHA	5 person shared accommodation	1992
Iverson Rd Camden NW1	PCHA	2 x 1-bed flat 2 x 2 & 1 x 3 shared units	1992
Faraday Rd Kensington W10	KHT	12 person shared scheme	1992
Davenport Rd Lewisham SE6	CARA	4 x 1-bed flats	1992



CARA Providing  
homes across  
London





CARA's research facility has been fundamental in obtaining objective data which highlights the particular problem of homelessness affecting single Irish people. Our developments to date have been based on this investigation of needs which have then been addressed by CARA.

During this year information has been provided to a wide range of people and organisations including Housing Associations, students, Academics and Local Authorities. CARA's extensive data on and knowledge of the needs of the Irish single homeless in London provided valuable information to the recent intergovernmental hearings on the Irish Experience in Britain.

It is extremely unfortunate that proposed cuts in The London Boroughs Grant Scheme funding may seriously affect if not curtail this work.

### Project Based Research

As well as providing evidence of the needs of Irish single homeless people the research post is also involved with evaluating the success of the service that is provided in response to those needs. Work with residents provides valuable information on the design and management of the projects as well as on their personal needs and aspirations. Already during the first phase of this work there is evidence to suggest that CARA's stated aim of providing culturally sensitive housing to assist people to regain confidence and achieve a sense of independence after many years of institutional living is beginning to bear fruit. Moreover this work is tending to demonstrate that CARA is reaching out to Irish people whose experiences typify those of the homeless identified in the Westminster Report and the localised Borough Studies carried out throughout London.

### Westminster Report

The comprehensive version of the Westminster Report has been completed and will be published shortly. Thanks to Professor Damian Hannon for his constructive advice and compliments with regard to this study. The Report gives a much needed in depth account of Irish Homelessness in London and will prove a very useful resource.

### Local Studies

CARA is continuing to examine individual London Boroughs in order to discover the

particular localized need amongst single Irish homeless people. This research enables CARA to identify the most pressing problems when decisions are made on what type of housing to develop and where to develop it. Recent updates have been made to studies in Camden, Hammersmith and Fulham, Haringey, Hackney and Lambeth. An entirely new study was undertaken in Barnet. The data obtained provided the basis for the development of new projects in these areas which are now in the pipeline. The research also provided useful material for the Housing Initiative project.

### AIDS and Housing

A great deal of time this year has been spent on examining the issue of HIV and housing as it affects the Irish Community. This work has been pursued to investigate implications of AIDS on existing CARA projects. It has also been necessary to research the extent and nature of the Irish population in London with AIDS or HIV and to pinpoint what further research needs to be done. Steady progress has been made on exploring the need for culturally specific housing projects for Irish people with AIDS. Evidence gathered so far would suggest that such a development is much needed as the Irish population in London with AIDS is extensive.

Noel Clarke  
*Researcher*



## Finance Report

### CARA Irish Homeless Project

#### Balance Sheet

as at 31 March 1991

	Notes	£	£	1990 £
Fixed Assets	2		12,670	<u>12,846</u>
Current Assets				
Hostel Deficit Grant	3	14,977		10,710
Debtors	4	20,335		3,066
Cash at Bank and in Hand		<u>89,558</u>		<u>65,946</u>
		124,870		84,722
Creditors				
Amounts Payable Within One Year	5	81,806		63,204
Met Current Assets		43,064	<u>21,518</u>	
Total Assets Less Current Liabilities		55,734	34,364	
Provisions	6		(38,725)	(16,509)
Deferred Income			<u>( 8,650)</u>	<u>(10,789)</u>
Excess of Current Liabilities and Provision over Assets			<u>8,359</u>	<u>7,066</u>
Capital and Reserves				
Income and Expenditure Account			<u>8,359</u>	<u>7,066</u>



## Finance Report

CARA Irish Homeless Project  
Income and Expenditure Account  
for the Year Ended 31 March 1991

	Notes	£	£	1990 £
Total Deficit on Property Revenue Account			(39,523)	<u>(32,401)</u>
Development Administration				
Grants & Donations	7a	34,237		-
Less: Management Expenses	8	<u>(18,033)</u>		<u>-</u>
Surplus for the Year			16,204	<u>-</u>
Other Income and Expenditure				
Housing Activities				
Grants and Donations	7b	76,924		89,828
Bank Interest		6,757		5,886
Other Income		<u>2,212</u>		<u>-</u>
		85,903		95,714
Less: Management Expenses	8	<u>76,878</u>		<u>81,866</u>
Surplus for the Year			<u>9,025</u>	<u>13,848</u>
Total Deficit for the Year before Deficit Grants			(14,294)	(18,553)
Add: Hostel Deficit Grant Receivable			44,715	27,991
Less: Provision for Non-Recovery			<u>(12,453)</u>	<u>( 6,612)</u>
Surplus for the Year After Grants			17,968	2,823
(Deficit/Surplus at Beginning of Year				
As Previously Reported		( 1,802)		943
Prior Year Adjustment		<u>8,868</u>		<u>-</u>
As restated			7,066	943
Transfers (to)/from Provisions	6		<u>(16,675)</u>	<u>3,300</u>
Surplus at End of Year			<u>8,359</u>	<u>7,066</u>

## Bankers

Allied Irish Bank Ltd.,  
629 Holloway Road,  
London N19

## Auditors

Sayer Vincent,  
41 North Road,  
London N7



## **Management Committee Members**

---

Gearoid O'Meachair — Chair

Joan Kane — Secretary

Tom Gateley — Treasurer

Christine Arthur

Breege Brandon

Sally Costello

Bobby Gilmore

Brenda McLoughlin

George Meehan

Rory Murphy

Adrian Smith

Tom Woodhouse

## **Staff Team**

---

### **Central Office**

---

Mark Robinson — Director

Seamus Kelleher — Development Manager

Noel Clarke — Researcher

William Miller — Housing Initiatives Officer

Vicky Sholund — Accounts

### **Project Manager**

---

Mary Boyle

Barry Butler

Jack Hynes

Ann McCarney

Don Magee

Tony Nolan

Mari Stackpoole

### **CARA is affiliated to**

---

The National Federation of Housing Associations

The London Housing Associations Council

SITRA

Thanks to Peter Eustace for photographs of  
residents



## **Central Office**

---

424 Seven Sisters Rd  
Manor House  
London N4 2LX  
Tel: 081-800 2744

### **FUNDED BY**



registered at the Housing  
Corporation (LH 3810)

company registration  
no. 1833268

charity registration  
no. 290182

CARA is a company limited  
by guarantee  
registered office  
72 Stroud Green Rd.  
London N4 3ER