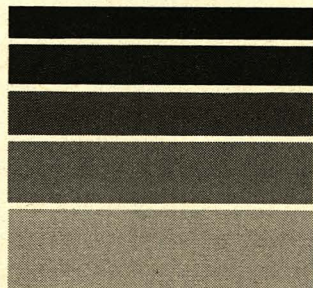

***Course Programme
in Irish Studies for
1987-1988***

P·N·L

**THE POLYTECHNIC OF
■ NORTH LONDON ■**



THE IRISH STUDIES CENTRE

The Irish Studies Centre was established by PNL in October 1986. The aims of the Centre are to increase the understanding and appreciation of: the Irish contribution to all aspects of British economic, cultural, political and social life; the history of and contemporary experience in Ireland; and of the unique relationship which exists between Britain and Ireland. By means of teaching, research and community interaction, the Centre aims to explore the experience of the Irish in Britain – and in London in particular – and to develop a comprehensive data resource. It will strive to promote the educational interests of local Irish people and to develop active educational links with Ireland – in the first instance with the Dublin Institute of Technology.

THE TEACHING PROGRAMME OF THE CENTRE

In order to begin implementing these aims one of the first tasks of the Centre was to develop its educational potential. The dual concern was to respond to demands from the local north London Irish community for a relevant curriculum and to promote Irish Studies as an area of academic inquiry in this country. Plans were made to prepare a half degree in Irish Studies and to develop joint courses with local Adult Education Institutes. These plans reflected the need for Irish Studies courses to become more specialised, catering more precisely for particular interests and concerns, and to offer the possibility of certification at degree level. The Centre is also planning inservice training courses for various professional groups.

THE LOCATION OF THE IRISH STUDIES CENTRE

In the Summer of 1987 the Irish Studies Centre became part of the Access and Continuing Education Centre (ACE) at the Polytechnic. ACE aims to make the services and resources of the Polytechnic available to increasing numbers of north London people. The Polytechnic has a long history as a pioneering provider of alternative entry routes for adult students without conventional qualifications.

IRISH STUDIES CENTRE – COURSE PROGRAMME FOR 1987-1988

1 ADULT EDUCATION COURSES

The following three courses have been organised jointly with Islington AEI, Camden AEI and The Working Men's College and in each case the course will take place at a branch of the Adult Education Institute involved:

Irish Migration to Britain

This course will provide an overview of the history and contemporary experiences of Irish migration to Britain. A number of themes will run throughout the sessions: the relationship for migrants between where they come from and their experience in the country of destination; the economic, social and political contexts for the Irish in Britain; and the issue of identity.

Course Tutor: Mary J. Hickman

The course will run for 8 weeks, commencing on Wednesday 23 September at 7pm at the Archway Branch of Islington Adult Education Institute – George Orwell School, Holland Walk (off Duncombe Road), Elthorne Estate, London N19 3EU. Enrolment will take place on 16 September at the George Orwell School – Tel 01-272 4772.

Feminism and Ireland

This course will explore the history and politics of Irish Feminism, North and South, from the turn of the century to the contemporary period. It will also look at Irish women's contact with British Feminism and the debates which have emerged.

Course Tutor: Ann Rossiter

The course will run for 8 weeks commencing on 21 September at 7pm at the Kentish Town branch of Camden Adult Education Institute – 87 Holmes Road, London NW5. Enrolment will take place in the week beginning 14 September at Holmes Road – Tel 01-267 1414. Camden AEI will be providing information on all courses from 1 September.

Irish Language Post A-Level Gaelic Workshop

This course is suitable for those who already have a reasonable knowledge of Irish. The project seeks to present students with an opportunity to make use of the language in other than purely social situations. Students will be able to prepare short talks, write brief articles and participate in discussions on topical issues. Instruction will

be given to improve all these skills. Guest speakers will be invited and it is hoped to publish students' work towards the end of the course.

Course Tutor: Caoimhin O Flatharta

The project will run for three terms commencing on Thursday 24 September at 7pm at The Working Men's College - Crowndale Road, London NW1 1TR. Enrolment will take place between 6-8pm on 7-11 September at The Working Men's College - Tel 01-387 2037/8208. The course fee is £36.00.

2 FOUNDATION COURSE IN IRISH STUDIES

A Foundation Course in Irish Studies will commence at the Polytechnic in the second semester of the academic year: February-June 1988. The course will last for 14 weeks. It will comprise three parts: migration/the Irish in Britain; the history/politics of Ireland; and the culture/literature of Ireland.

The intention is that this course will provide a taster for the Half Degree in Irish Studies that it is hoped will be starting in October 1988. While the course will obviously be of interest to anyone contemplating further study in this area, it will also be useful to anyone interested in gaining an overall view of Irish Studies in the form of a short course.

The course will involve assignments. A study skills option will be available for those who have recently returned to study.

More details about the course and registration procedures will be issued nearer the commencement date.

3 HALF DEGREE IN IRISH STUDIES

Plans are under way to provide a Half Degree in Irish Studies as part of the Evening Degree Scheme at PNL. It is hoped that this will be able to start in October 1988. The degree will be based on a modular system and students taking other subjects and those who just want to sign up for one unit will be able to take individual units of their choice. In addition, it is hoped that a CERTIFICATE of IRISH STUDIES and a DIPLOMA in IRISH STUDIES will be available to those taking fewer units than those which make up the half degree.

For further details and any enquiries about all the above courses please contact Mary Hickman at the Irish Studies Centre, PNL (telephone 01-607 2789 extension 2337) or telephone the ACE office on the direct line 01-700 4880.