



**REWILD MY STREET**

## **A model for biodiverse urban redevelopment**

**Siân Moxon**

BSc BArch ARB BREEAM-AP FHEA

Cass Research Forum 2018-19: Wildness Matters

(Image: David Goddard)



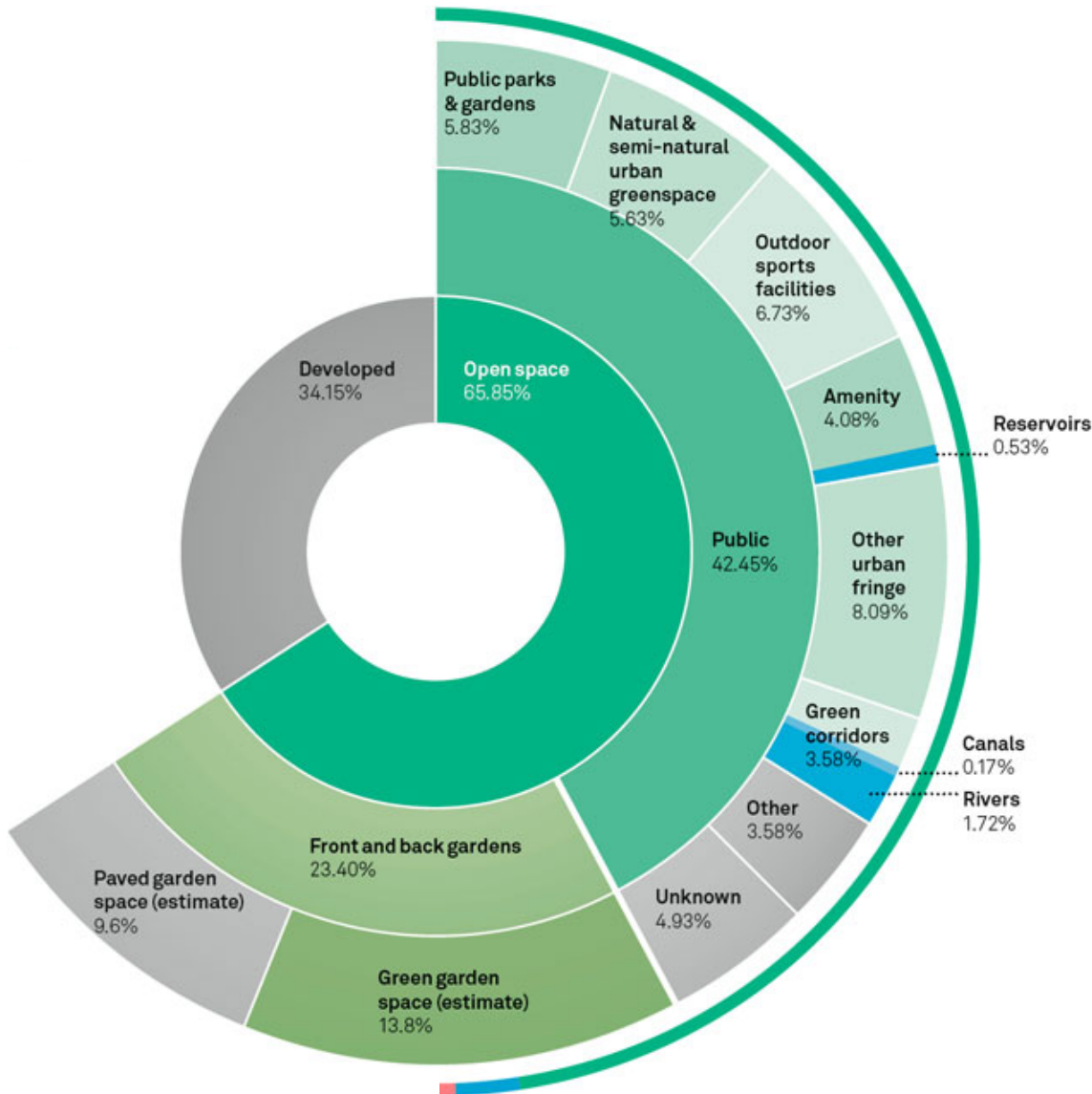
# London to Become World's 1<sup>st</sup> National Park City



- London 47% green/blue space<sup>1</sup>
- NPC 2019: connect more people to nature; create more greenspace for wildlife & people
- Mayor: 50% green space & +10% tree cover by 2050<sup>1</sup>



# London's Gardens are Going Grey



- Gardens cover a quarter of London<sup>1</sup>
- Lose 2.5 Hyde Parks/year as gardens go grey<sup>2</sup>
- UK biodiversity in decline & urban habitat vital<sup>3</sup>

# We Need to Rewild Our Streets



Siân & Jon Moxon (altered photos courtesy of Daniel Case, Super.lukas, Didier Descouens, Ninjatacoshell, Peter Mulligan, Claus Rebler, Karen Arnold)

# New Model to Enable Rewilding | Free Online Resource

Rewild My Street provides guidance for people wishing to adapt their homes, gardens and streets to encourage wildlife. Inspiring images show how to integrate wildlife features into a typical urban setting. Links to stylish products and step-by-step activities show how to achieve this, while species and habitat information highlight the value of making these changes.

## Species



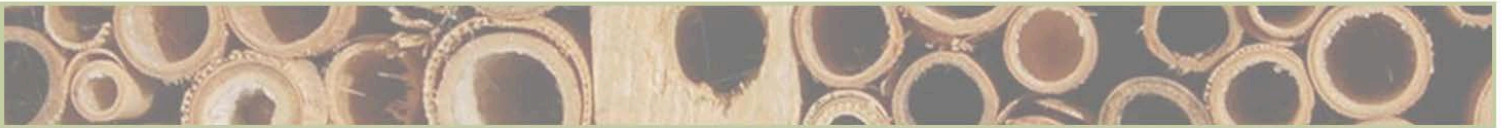
Discover the diverse wildlife species you could attract to your street, home and garden.

## Habitats



Find out about vital wildlife habitats you could create in your street, home and garden.

## Products



Buy stylish products to attract wildlife to your street, home and garden.

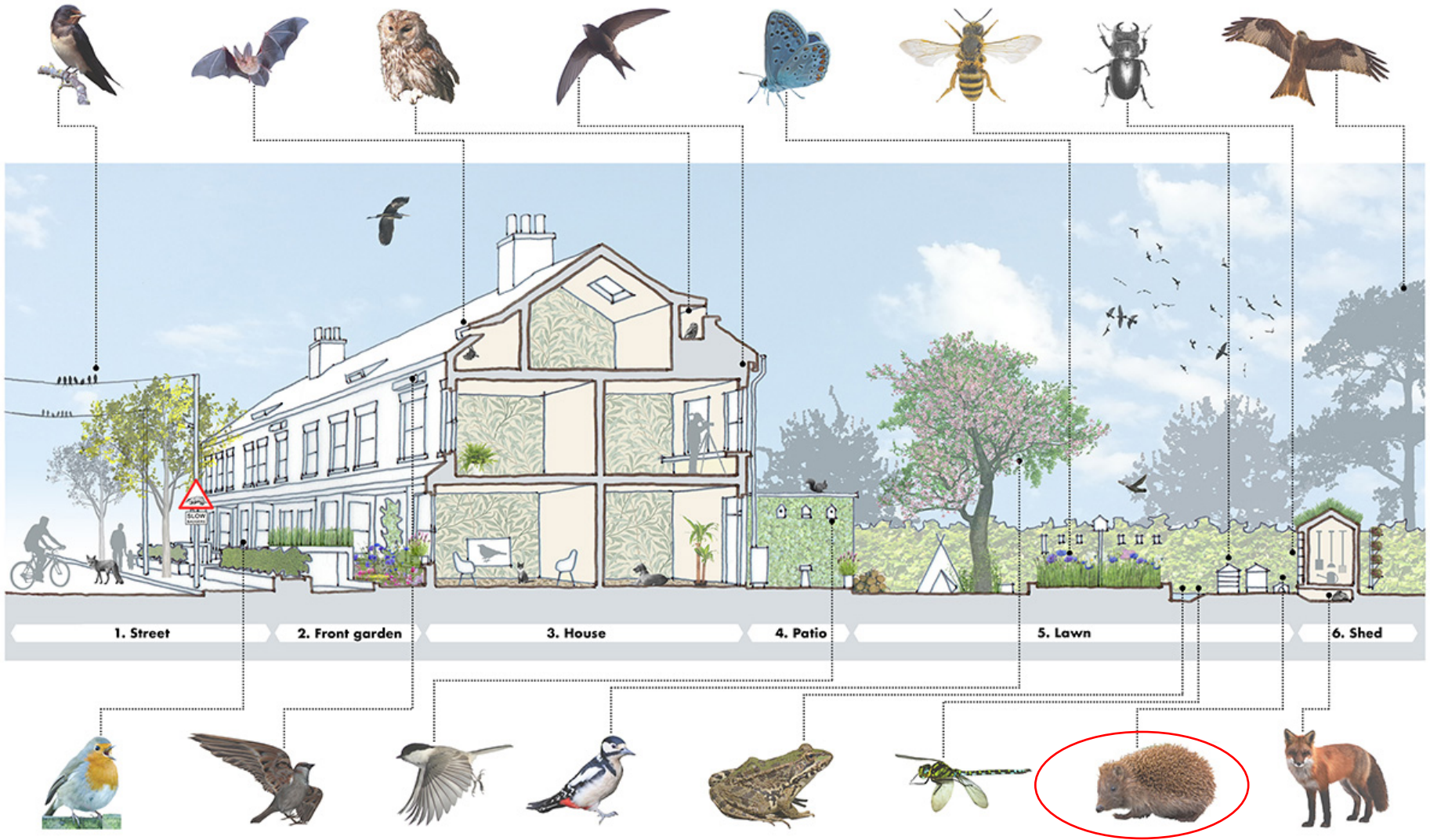
## Activities



Plan activities for you and your family to help wildlife in your street, home and garden.



# Architectural Drawings | Species - Sectional Perspective



Siân & Jon Moxon (altered photos courtesy of Charles J Sharp, Pau.artigas, Super.lukas, Didier Descouens, Ninjatacoshell, George Hodan, Piotr Siedlecki, Peter Mulligan, Claus Rebler)

# Sectional Perspective | Key - Species weblinks

Species	Guide	Species	Guide	Species	Guide
Mammal	<a href="#">The Mammal Society</a>	Bird of prey	<a href="#">Hawk &amp; Owl Trust</a>	Bird (other)	<a href="#">RSPB</a>
Badger	<a href="#">The Mammal Society</a>	Hobby	<a href="#">Hawk &amp; Owl Trust</a>	Blackbird	<a href="#">RSPB</a>
Bats	<a href="#">Bat Conservation Trust</a>	Kestrel	<a href="#">Hawk &amp; Owl Trust</a>	Black Cap	<a href="#">RSPB</a>
Deer (Muntjac)	<a href="#">The Mammal Society</a>	Owl (Tawny)	<a href="#">Hawk &amp; Owl Trust</a>	Black Redstart	<a href="#">RSPB</a>
Fox	<a href="#">The Mammal Society</a>	Peregrine	<a href="#">Hawk &amp; Owl Trust</a>	Crows	<a href="#">RSPB</a>
Hedgehog	<a href="#">Hedgehog Street</a>	Red Kite	<a href="#">Hawk &amp; Owl Trust</a>	Ducks/geese/swans	<a href="#">RSPB</a>
Mole	<a href="#">The Mammal Society</a>	Sparrowhawk	<a href="#">Hawk &amp; Owl Trust</a>	Dunnock	<a href="#">RSPB</a>
Mouse (Wood)	<a href="#">The Mammal Society</a>			Finches	<a href="#">RSPB</a>
Otter	<a href="#">The Mammal Society</a>			Goldcrest	<a href="#">RSPB</a>
Rabbit	<a href="#">The Mammal Society</a>			Gulls/terns	<a href="#">RSPB</a>
Rat (Brown)	<a href="#">The Mammal Society</a>			Heron (Grey)	<a href="#">RSPB</a>
Shrew (Common)	<a href="#">The Mammal Society</a>			Nuthatch	<a href="#">RSPB</a>
Squirrel (Grey)	<a href="#">The Mammal Society</a>			Parakeet (Ring-necked)	<a href="#">RSPB</a>
Vole (Field)	<a href="#">The Mammal Society</a>			Pigeons/doves	<a href="#">RSPB</a>
Water Vole	<a href="#">The Mammal Society</a>			Robin	<a href="#">RSPB</a>

Species	Guide	Species	Guide	Species	Guide
Amphibian/reptile	<a href="#">Froglife</a>	Invertebrate	<a href="#">Buglife</a>	Plant/fungus	<a href="#">Plantlife</a>
Adder	<a href="#">Froglife</a>	Ants	<a href="#">Buglife</a>	Fungi	<a href="#">Woodland Trust</a>
Frog (Common)	<a href="#">Froglife</a>	Bees/wasps	<a href="#">Buglife</a>	Trees/hedges	<a href="#">Woodland Trust</a>
Grass Snake	<a href="#">Froglife</a>	Beetles	<a href="#">Buglife</a>	Wildflowers	<a href="#">Plantlife</a>
Lizard (Common)	<a href="#">Froglife</a>	Bumblebees	<a href="#">Bumblebee Cons. Trust</a>		
Newt (Great Crested)	<a href="#">Froglife</a>	Butterflies	<a href="#">Butterfly Conservation</a>		
Newt (Smooth)	<a href="#">Froglife</a>	Flies	<a href="#">Buglife</a>		
Slow Worm	<a href="#">Froglife</a>	Grasshoppers/crickets	<a href="#">Buglife</a>		
Toad (Common)	<a href="#">Froglife</a>	Lacewings	<a href="#">Buglife</a>		

# Sectional Perspective | Example Species Weblink: Hedgehog



Home > All about hedgehogs

Distribution of hedgehogs

Hedgehog habitats

What do wild hedgehogs eat?

Breeding and babies

Hibernation

Do badgers or foxes eat hedgehogs?

Do hedgehogs have fleas?

Tracks and signs

How many hedgehogs are left in Britain?

Why are hedgehogs disappearing?

Monitoring hedgehogs

## Learn all about hedgehogs

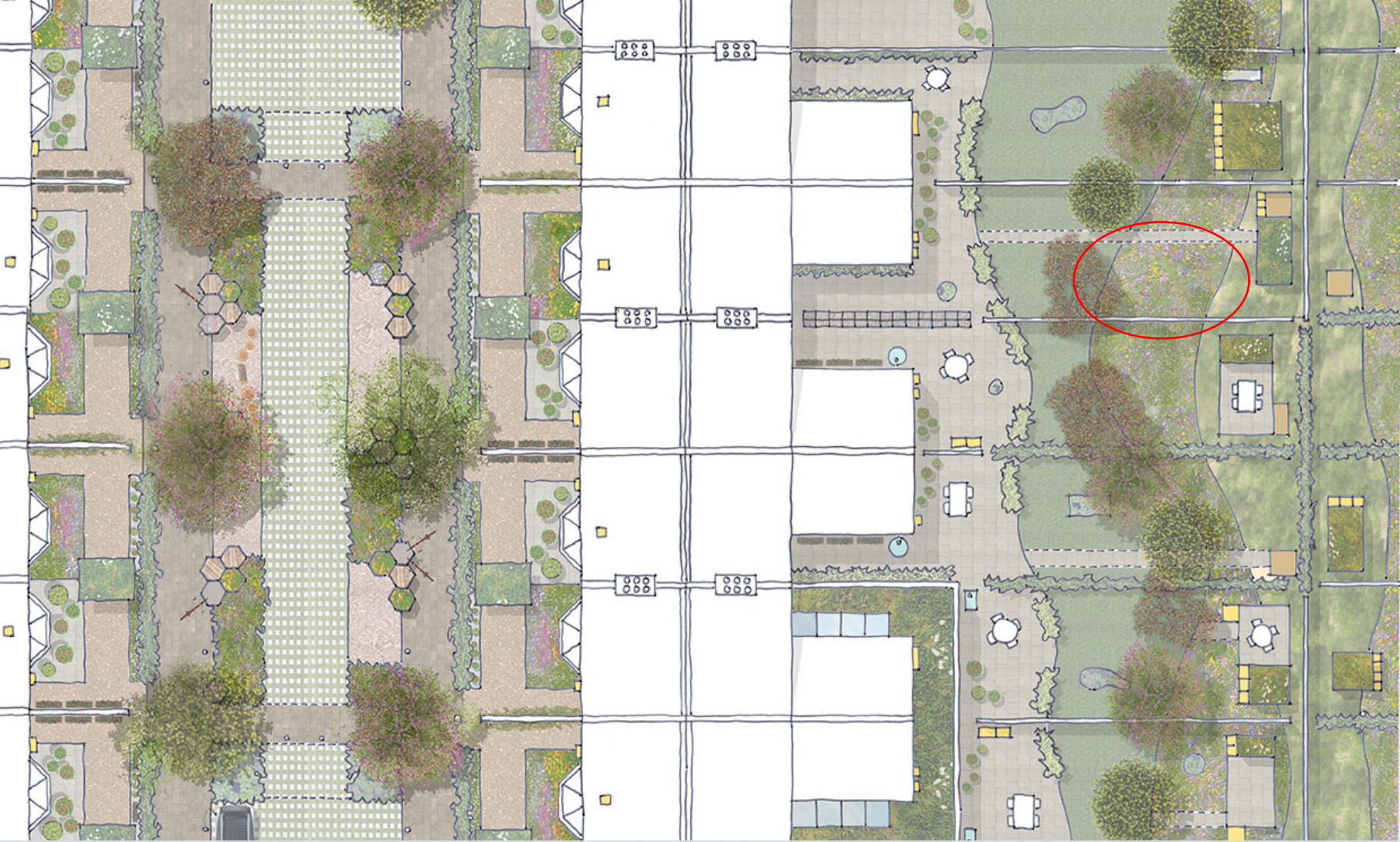
**The west-European hedgehog, *Erinaceus europaeus***

These pages cover everything you could ever want to know about the hedgehog in Britain, including their distribution, behaviour, ecology and the threats that they face.





# Architectural Drawings | Habitats - Street Plan



2. Front garden

1. Street

2. Front garden

3. House

4. Patio

5. Lawn

6. Meadow

7. Shed

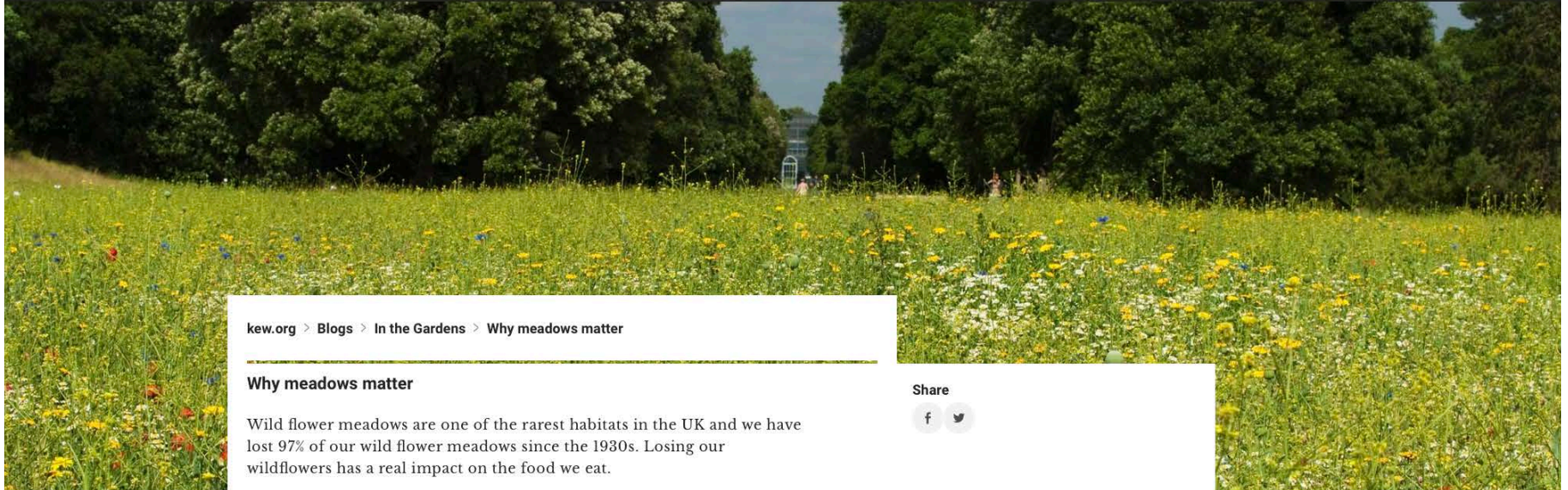
# Street Plan | Key – Habitat weblinks

Habitat	Guide	Habitat	Guide	Habitat	Guide
<b>1. Street</b>		<b>2. Front garden</b>		<b>3. House</b>	
Roads/pavements	<a href="#">Susdrain</a>	Driveway/path	<a href="#">RSPB</a>	Green-roof extension	<a href="#">RSPB</a>
Bike port green roof	<a href="#">RSPB</a>	Bin store green roof	<a href="#">RSPB</a>	Rainwater butt	<a href="#">RSPB</a>
Street trees	<a href="#">City of Trees</a>	Garden tree	<a href="#">RSPB</a>	Roofs for birds	<a href="#">RSPB</a>
Rain gardens	<a href="#">LWT</a>	Boundary hedge	<a href="#">RSPB</a>	Gate gap	<a href="#">Hedgehog Street</a>
Hedgerow	<a href="#">RSPB</a>	Boundary fence	<a href="#">RSPB</a>		
Modular planters	<a href="#">RHS</a>	Window box	<a href="#">RSPB</a>		
Bark/log play area	<a href="#">RSPB</a>	Bark mulch	<a href="#">RSPB</a>		
Treetop boxes	<a href="#">BBC</a>	Bat box	<a href="#">RSPB</a>		
Street park	<a href="#">National Trust</a>	Hedge/fence gap	<a href="#">Hedgehog Street</a>		

Habitat	Guide	Habitat	Guide	Habitat	Guide
<b>4. Patio</b>		<b>5. Lawn</b>		<b>6. Shed</b>	
Patio paving	<a href="#">RSPB</a>	Garden tree	<a href="#">RSPB</a>	Shed green roof	<a href="#">RSPB</a>
Garden store roof	<a href="#">RSPB</a>	Pond	<a href="#">RSPB</a>	Boundary hedge	<a href="#">RSPB</a>
Bird bath	<a href="#">RSPB</a>	Boundary hedge	<a href="#">RSPB</a>	Boundary fence/wall	<a href="#">RSPB</a>
Boundary hedge	<a href="#">RSPB</a>	Boundary fence/wall	<a href="#">RSPB</a>	Pocket planter	<a href="#">RSPB</a>
Boundary fence/wall	<a href="#">RSPB</a>	Meadow	<a href="#">Kew Gardens</a>	Insect/frog home	<a href="#">RSPB</a>
Container plants	<a href="#">RSPB</a>	Homes for hedgehogs	<a href="#">RSPB</a>	Hedge/fence gap	<a href="#">Hedgehog Street</a>
Log pile	<a href="#">RSPB</a>	Hedge/fence gap	<a href="#">Hedgehog Street</a>		
Homes for birds	<a href="#">RSPB</a>				
Hedge/fence gap	<a href="#">Hedgehog Street</a>				



# Street Plan | Example Habitat Weblink: Meadow



**Kew** Royal Botanic Gardens

Membership and support      Menu

Search      Menu

**Kew Science**      **Kew Gardens** 30 mins from Central London      **Wakehurst** Kew's botanic garden in Sussex

[kew.org](#) > [Blogs](#) > [In the Gardens](#) > [Why meadows matter](#)

---

## Why meadows matter

Wild flower meadows are one of the rarest habitats in the UK and we have lost 97% of our wild flower meadows since the 1930s. Losing our wildflowers has a real impact on the food we eat.

**Date:** 24 May 2017  
**Blog team:** [In the Gardens](#)

**Why do meadows matter?**

*British wildflowers are under threat and therefore so are the pollinators they feed. Not only is it heartbreaking to lose the beauty and colour these native flowers give the UK landscape, but the plight of pollinators has a very real impact on the food we eat ourselves.* Royal Botanic Gardens, Kew Director, Richard Deverell

Wild flower meadows provide shelter and food for important pollinators including bees. There are over 250 species of bee in the UK and they play a vital part in supporting the ecosystem.

When wild flower meadows vanish so do pollinators, as well as other insects, and animals that eat insects, such as birds, hedgehogs and bats.

Bees are in particular decline in the UK. Wild flower meadows are extremely diverse

Share

f      t

# Architectural Drawings | Products - Garden Elevation & key



3. House      4. Patio      5. Lawn

Product	Shop	Product	Shop	Product	Shop
<b>4. Patio</b>		<b>5. Lawn</b>		<b>6. Shed</b>	
Green wall	<a href="#">Treebo</a>	Mini meadow	<a href="#">Meadowmat</a>	Insect hotel	<a href="#">Crocus</a>
Nest boxes	<a href="#">Habi Sabi</a>	Bird table/feeders	<a href="#">RSPB</a>	Green roof	<a href="#">The Posh Shed Company</a>
Bird bath	<a href="#">RSPB</a>	Container pond	<a href="#">Waterside Nursery</a>	Frog house	<a href="#">RSPB</a>
Container plants	<a href="#">Crocus</a>	Compost bin	<a href="#">Primrose</a>	Wildlife fence gap	<a href="#">Jacksons Fencing</a>
Log pile bench	<a href="#">Holmes &amp; Gardens</a>	Hedgehog house	<a href="#">Ark Wildlife</a>	Pocket planter	<a href="#">WallyGro</a>



# Architectural Drawings | Products - Street Elevation & key



1. Street    2. Front garden    3. House

Product	Shop	Product	Shop	Product	Shop
<b>1. Street</b>		<b>2. Front garden</b>		<b>3. House</b>	
Outdoor lighting	<a href="#">Woodscape</a>	<b>Green roof bin store</b>	<a href="#">Front Yard Company</a>	Nestbox camera	<a href="#">RSPB</a>
Planted bike port	<a href="#">Cyclehoop</a>	Raised bed	<a href="#">Woodbloxx</a>	Tawny owl nest box	<a href="#">RSPB</a>
Tree	<a href="#">Habitat Aid</a>	Window boxes	<a href="#">Crocus</a>	Anti-hunt cat collar	<a href="#">Hi-Craft</a>
Treetop beehive	<a href="#">Bee Kind Hives</a>	Sparrow terrace	<a href="#">NHBS</a>	Swift box	<a href="#">Swift Conservation</a>
Hedgerow	<a href="#">Habitat Aid</a>	Bat box/roof tile	<a href="#">NHBS</a>	Rainwater butt	<a href="#">Hugo</a>

**Street Elevations | Example Product Weblink: Greening**

# FRONT YARD COMPANY EST<sup>D</sup> 2007

[Shop](#) [About Us](#) [News](#) [Contact](#)



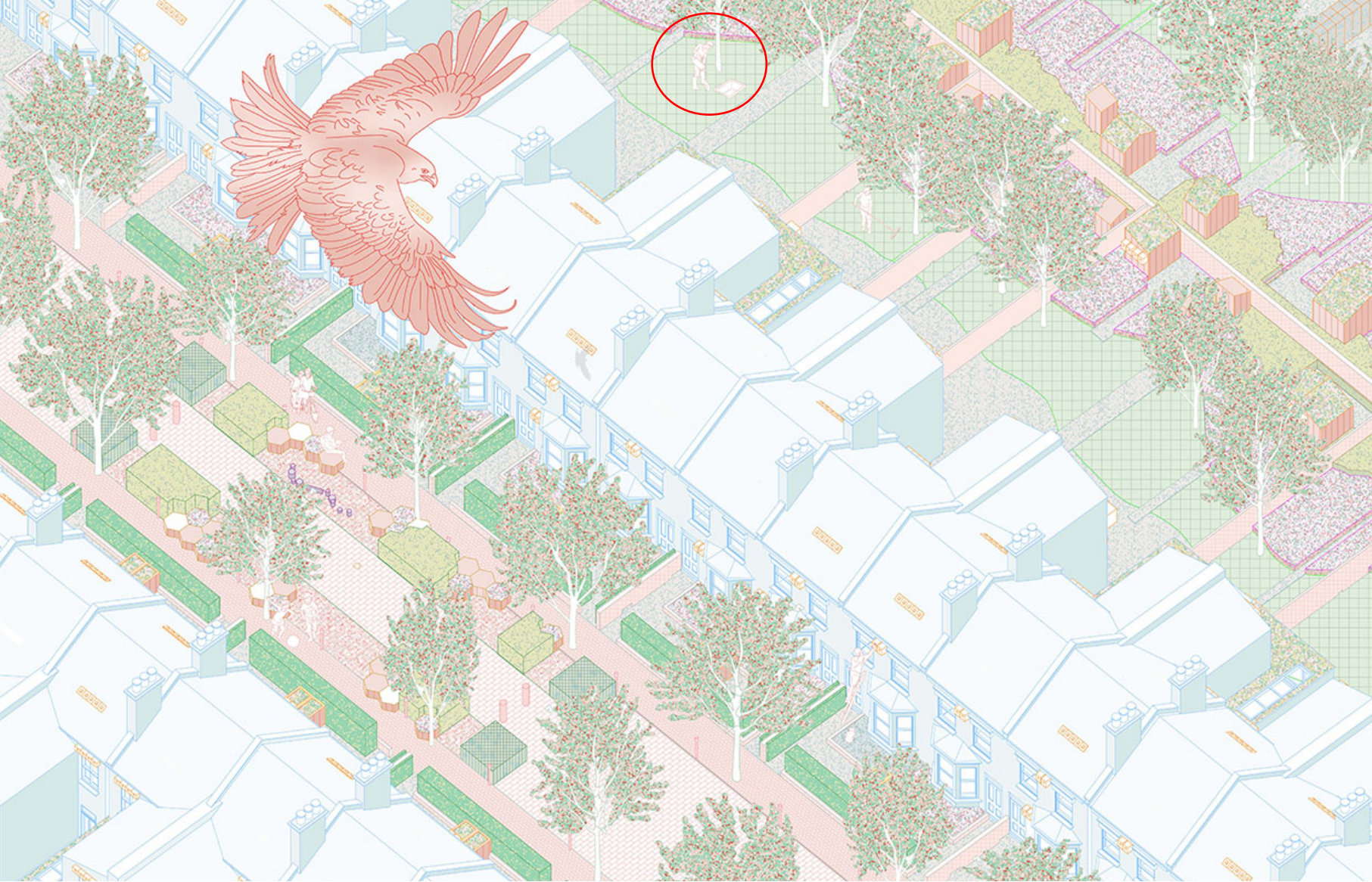
PlantLock



BinDock Double



# Architectural Drawings | Activities - Isometric



# Isometric | Key - Activities weblinks

Activity	Step-by-step	Activity	Step-by-step	Activity	Step-by-step
<b>1. Street</b>		<b>2. Front garden</b>		<b>3. House</b>	
Limit outdoor lighting	<a href="#">RHS</a>	Green your bin store	<a href="#">LWT</a>	Make a nestbox cam	<a href="#">Gardeners' World</a>
Plant your bike port	<a href="#">Front Yard Co</a>	Build a raised bed	<a href="#">RHS</a>	Build an owl nest box	<a href="#">Barn Owl Trust</a>
Plant a tree	<a href="#">RSPB</a>	Plant window boxes	<a href="#">RSPB</a>	Limit cat kills	<a href="#">RSPB</a>
Make a bee hotel	<a href="#">Buglife</a>	Make a sparrow box	<a href="#">RSPB</a>	Build a swift box	<a href="#">Action for Swifts</a>
Plant a hedgerow	<a href="#">LWT</a>	Build a bat box	<a href="#">Bat Conservation Trust</a>	Install a rainwater butt	<a href="#">RSPB</a>

Activity	Step-by-step	Activity	Step-by-step	Activity	Step-by-step
<b>4. Patio</b>		<b>5. Lawn</b>		<b>6. Shed</b>	
Grow a green wall	<a href="#">RSPB</a>	Plant a mini meadow	<a href="#">Buglife</a>	Make an insect hotel	<a href="#">Buglife</a>
Build a bird box	<a href="#">RSPB</a>	<del>Feed the birds</del>	<a href="#">RSPB</a>	Add a green roof	<a href="#">LWT</a>
Make a bird bath	<a href="#">RSPB</a>	<b>Make a mini pond</b>	<a href="#">RSPB</a>	Make a frog house	<a href="#">RSPB</a>
Grow container plants	<a href="#">RSPB</a>	Make compost	<a href="#">RSPB</a>	Make a wildlife gap	<a href="#">RSPB</a>
Make a log pile	<a href="#">Buglife</a>	Make a hog house	<a href="#">Hedgehog Street</a>	Make a pocket planter	<a href="#">Birds &amp; Blooms</a>



# Isometric Key | Example Activity Weblink: Mini pond



[Shop](#) | [Community](#)

[Log in](#)

[Search](#)

[About the RSPB](#)

[Our work](#)

[Birds & wildlife](#)

[Get involved](#)

[Reserves & events](#)

[Fun & Learning](#)

[Join & Donate](#)

[Home](#) > [Get involved](#) > ... > [Garden activities](#) > Create a mini-pond



Activity time:  
More than 2 hours



Difficulty level:  
Medium



Suitable for:  
Small garden, Large garden,  
Medium garden



To help:  
Frogs, toads & newts,  
Dragonflies & damselflies,  
Birds, Pond creatures

# Next Steps | Patterns - Tips guide

## Wild Makeover

Choose from these 5 tips to start rewilding your home

See [rewildmystreet.org](http://rewildmystreet.org) for other wild makeover activities, plus expert information on urban wildlife species, habitats & products



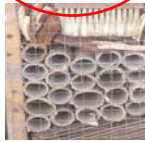
1. Quick fix  
Log pile



2. Instant impact  
Window box



3. Most wildlife  
Mini pond



4. Crafty kids  
Insect hotel



5. Street cred  
Wildlife gap

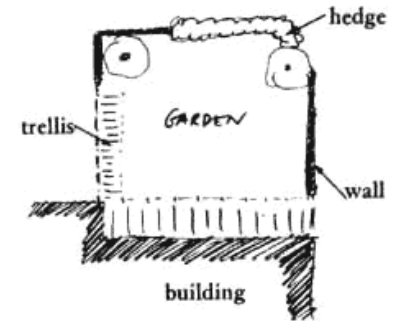


2. For instant impact  
plant a window box

## Brighten your street & attract bees with instant colour



Habitat	Wildflowers	
Species	Bees, butterflies, moths	*****
Product	Crocus planter & plants	£££
Activity	Plant up window boxes	30 mins; low skill



Tips: try native, colourful, scented or drought-tolerant plants

After care: water regularly when dry; replace top layer of compost annually; cut back or replace plants after flowering for seasonal interest

Also for instant impact: add a green roof, feed the birds, add a bird bath



# Find Out More

Contact

REWILD MY STREET

Home

About

Resources

News

Contact

Transforming London's streets for wildlife



Get more wildlife in your garden | Turn your street green | Be outdoors with your kids

Rewild My Street provides guidance for people wishing to adapt their homes, gardens and streets to encourage wildlife - and stop London's streets going grey.

[w rewildmystreet.org](http://rewildmystreet.org)

[Instagram icon](https://www.instagram.com/rewildmystreet) [Twitter icon](https://twitter.com/rewildmystreet) @rewildmystreet

[✉ s.moxon@londonmet.ac.uk](mailto:s.moxon@londonmet.ac.uk)