

BRITISH ASSOCIATION FOR IRISH STUDIES
SUB-COMMITTEE TO EXAMINE THE CONSTITUTION

AN EXTRACT OF NOTES MADE FOLLOWING THE LATEST SUB-COMMITTEE
MEETING (8 May 1993)

A chart outlining the proposed general structure is attached.

1. ADVISORY BODY (Senate?):

- * an advisory body made up of representatives nominated by affiliated groups
- * groups will pay an annual affiliation fee
- * affiliated groups will include:
 - local groups formed by BAIS members (£10 fee)
 - local Irish Studies groups formed by non-BAIS members (£20 fee)
 - HE institutions with degree courses (£30 fee)
 - LEAs (£50 fee)
 - WEAs (£50 fee)
 - professional education bodies and other professional bodies (£50 fee)
 - trade unions (representing professional educational bodies or providing education themselves) (£50 fee)
- * each affiliated group will nominate one member to the advisory body
- * meetings will be presided over by the Association's elected Chair
- * the advisory body will represent its views, advice and recommendations to the council through the Association's elected Chair
- * except for local groups formed by BAIS members, affiliated membership will include receipt of:
 - BAIS newsletter
 - bulletins

2. FINANCE COMMITTEE:

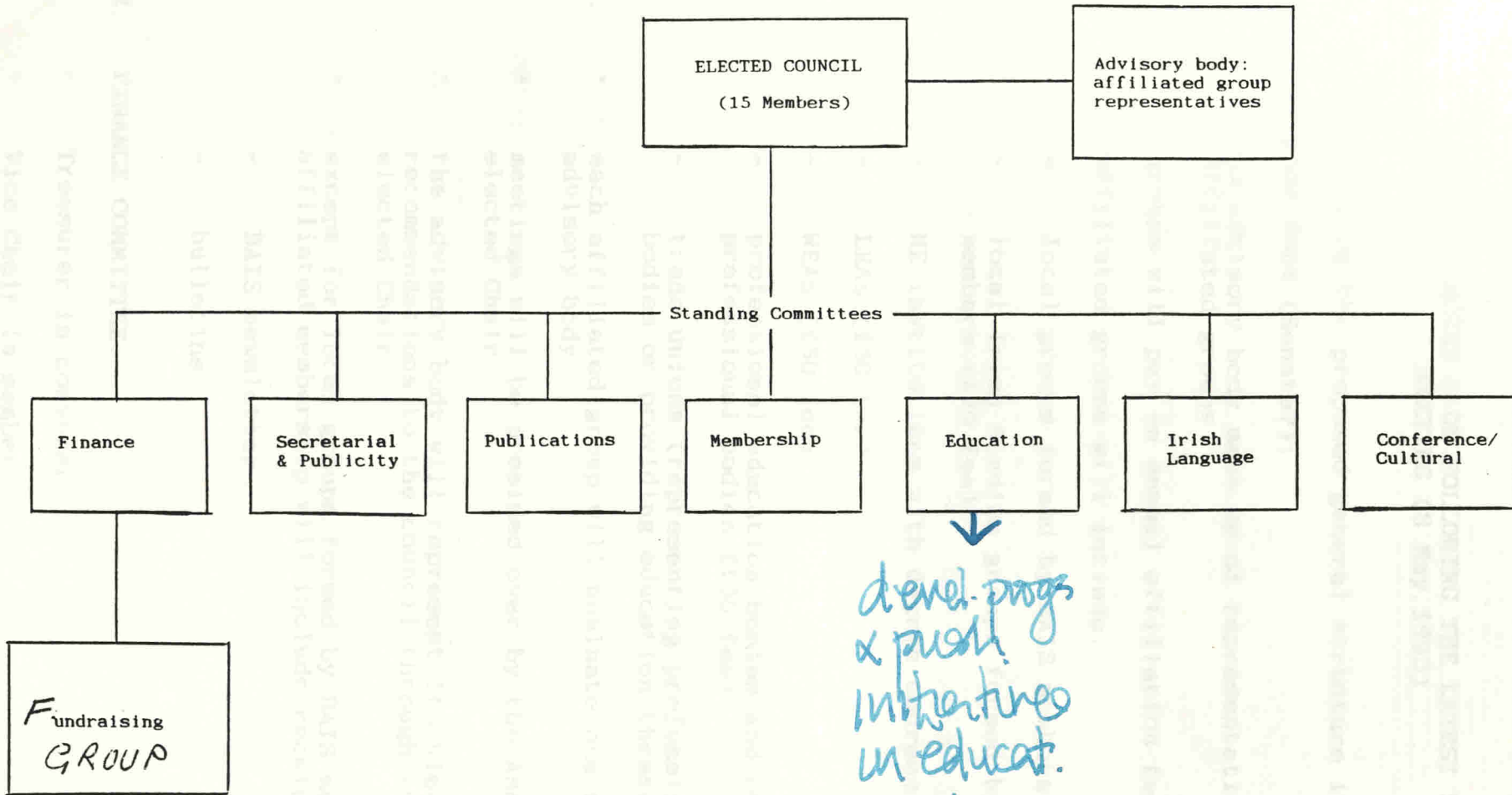
- * Treasurer is convener
- * Vice Chair is member

* responsible for:

- producing, implementing and monitoring business plan
 - setting priorities for fundraising
 - submitting applications for statutory and charity funds
 - identifying and, in liaison with other appropriate committees, publicising the sources of support; e.g. by producing brochure listing those supporting BAIS
 - budgeting
 - control of expenditure
 - receiving, and accounting for, membership fees passed on by the membership committee
 - control of all funds; membership fees and external
- * link between fundraising group and council. Provide the dynamism and drive behind the group

3. FUNDRAISING GROUP:

- * reference made to document 'Proposed Structure for Fund Raising Leadership', already circulated
- * Vice Chair will be a member
- * Treasurer will be a member
- * interested, non-party members will be co-opted
- * the group will be informal and loosely structured
- * it will offer advice which may be reformulated as policy by the finance committee and ratified by the council through established procedure
- * potential donors and/or advisers to be identified by the finance committee and approached on a personal basis
- * group assembled by 'networking' through personal contact by peers, i.e. by using the 'pyramid' method
- * the group will devise an appeal structure
- * the Vice Chair and Treasurer will supply the dynamism and the drive, and the finance committee will provide the link between group and council



devel. proggs
 & push
 initiatives
 in educat.
 ↓
 Regional
 Section
 Constituencies