

Appendix 6: Descriptive Statistics of GLOBE Cultural Practices

Secondary Data Used in Analysis

1. GLOBE 'Practices' Data

Table 1 Explanation of Common Variables: GLOBE Practices & Values

variable name	storage type	display format	value label	variable label
cg_id	int	%8.0g		
country	str15	%15s		Country surveyed by GLOBE
pd	float	%9.0g		Power Distance
ua	float	%9.0g		Uncertainty Avoidance
ho	float	%9.0g		Humane Orientation
coi	float	%9.0g		Co.I Institutional Collectivism
coii	float	%9.0g		Co.II In-group Collectivism
as	float	%9.0g		Assertiveness
ge	float	%9.0g		Gender Egalitarianism
fo	float	%9.0g		Future Orientation
po	float	%9.0g		Performance Orientation
cluster	str14	%14s		

Common to Practices & Values

Table 2 GLOBE Cultural Practices for Anglo Cluster

Country	PD	UA	HO	Co.I	Co.II	AS	GE	FO	PO	Cluster
Australia	4.74	4.39	4.28	4.29	4.17	4.28	3.40	4.09	4.36	Anglo
Canada	4.82	4.58	4.49	4.38	4.26	4.05	3.70	4.44	4.49	Anglo
England	5.15	4.65	3.72	4.27	4.08	4.15	3.67	4.28	4.08	Anglo
Ireland	5.15	4.30	4.96	4.63	5.14	3.92	3.21	3.98	4.36	Anglo
New.Zealand	4.89	4.75	4.32	4.81	3.67	3.42	3.22	3.47	4.72	Anglo
South.Africa	5.16	4.09	3.49	4.62	4.50	4.60	3.27	4.13	4.11	Anglo
USA	4.88	4.15	4.17	4.20	4.25	4.55	3.34	4.15	4.49	Anglo
Cluster Mean	4.97	4.42	4.20	4.46	4.30	4.14	3.40	4.08	4.37	

Table 3 GLOBE Cultural Practices for Middle East Cluster

Country	PD	UA	HO	Co.I	Co.II	AS	GE	FO	PO	Cluster
Egypt	4.92	4.06	4.73	4.50	5.64	3.91	2.81	3.86	4.27	Middle.East
Kuwait	5.12	4.21	4.52	4.49	5.80	3.63	2.58	3.26	3.95	Middle.East
Morocco	5.80	3.65	4.19	3.87	5.87	4.52	2.84	3.26	3.99	Middle.East
Qatar	4.73	3.99	4.42	4.50	4.71	4.11	3.63	3.78	3.45	Middle.East
Turkey	5.57	3.63	3.94	4.03	5.88	4.53	2.89	3.74	3.83	Middle.East
Cluster Mean	5.23	3.91	4.36	4.28	5.58	4.14	2.95	3.58	3.90	

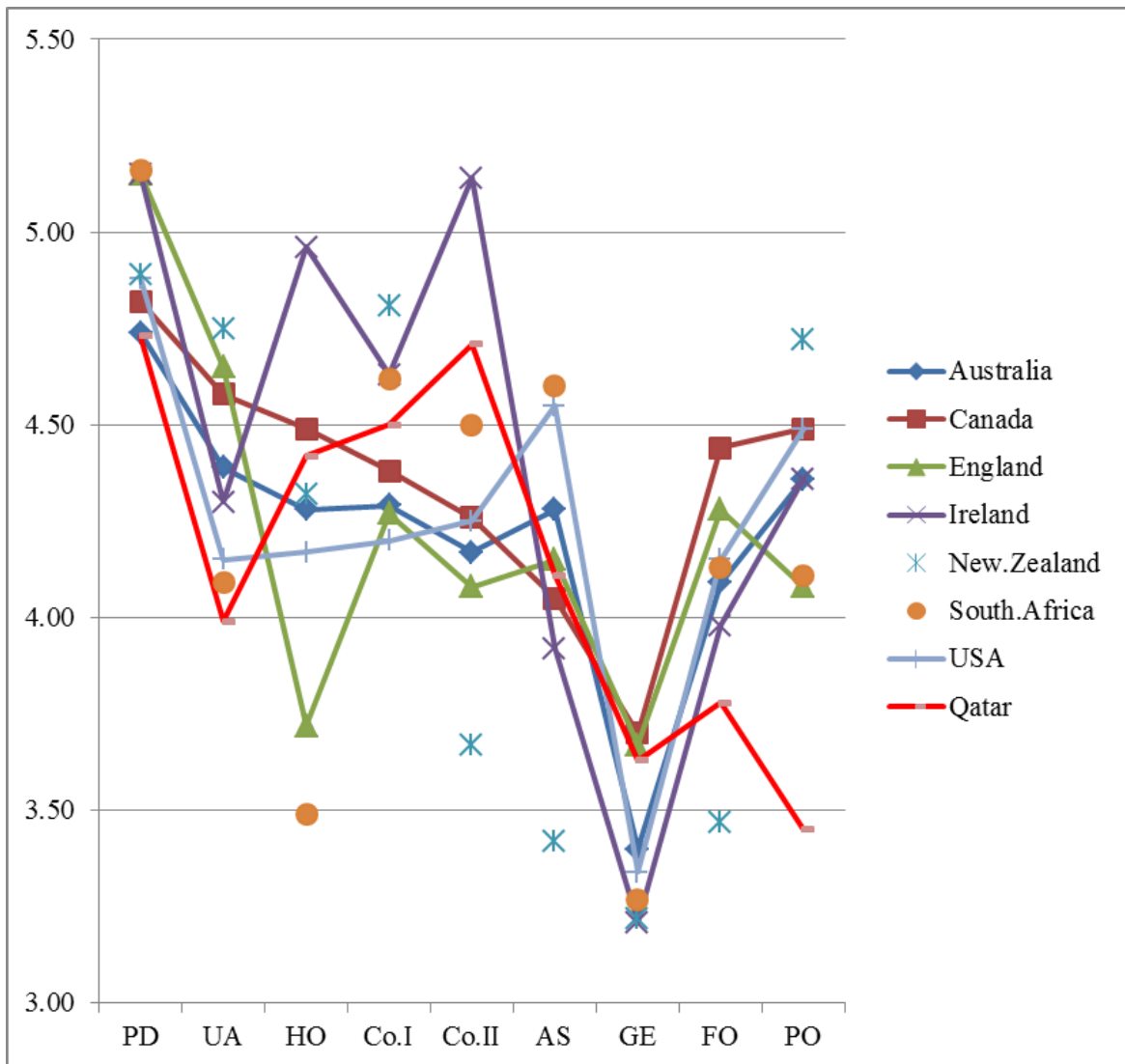


Figure 1 GLOBE Cultural Practices for Study Group of Countries

Table 4 Descriptive Statistics of GLOBE Cultural Practices for Anglo Cluster

	PD	UA	HO	Co.I	Co.II	AS	GE	FO	PO
count	7	7	7	7	7	7	7	7	7
mean	4.9700	4.4157	4.2043	4.4571	4.2957	4.1386	3.4014	4.0771	4.3729
sample standard deviation	0.1783	0.2531	0.4861	0.2295	0.4494	0.4030	0.2049	0.3053	0.2248
sample variance	0.0318	0.0641	0.2363	0.0527	0.2020	0.1624	0.0420	0.0932	0.0505
minimum	4.74	4.09	3.49	4.2	3.67	3.42	3.21	3.47	4.08
maximum	5.16	4.75	4.96	4.81	5.14	4.6	3.7	4.44	4.72
range	0.42	0.66	1.47	0.61	1.47	1.18	0.49	0.97	0.64
skewness	0.0716	-0.0033	-0.0430	0.4776	0.9080	-0.7540	0.8274	-1.3785	0.0363
kurtosis	-2.2555	-1.6875	0.0188	-1.4427	2.2147	0.6767	-1.1929	2.9310	-0.4587
coefficient of variation (CV)	3.59%	5.73%	11.56%	5.15%	10.46%	9.74%	6.02%	7.49%	5.14%
1st quartile	4.8500	4.2250	3.9450	4.2800	4.1250	3.9850	3.2450	4.0350	4.2350
median	4.8900	4.3900	4.2800	4.3800	4.2500	4.1500	3.3400	4.1300	4.3600
3rd quartile	5.1500	4.6150	4.4050	4.6250	4.3800	4.4150	3.5350	4.2150	4.4900
interquartile range	0.3000	0.3900	0.4600	0.3450	0.2550	0.4300	0.2900	0.1800	0.2550
mode	5.1500	#N/A	#N/A	#N/A	#N/A	#N/A	#N/A	#N/A	4.3600

Table 5 Descriptive Statistics of GLOBE Cultural Practices for Middle East Cluster

	PD	UA	HO	Co.I	Co.II	AS	GE	FO	PO
count	5	5	5	5	5	5	5	5	5
mean	5.2280	3.9080	4.3600	4.2780	5.5800	4.1400	2.9500	3.5800	3.8980
sample standard deviation	0.4468	0.2573	0.3047	0.3047	0.4957	0.3906	0.3983	0.2953	0.2979
sample variance	0.1997	0.0662	0.0929	0.0929	0.2458	0.1526	0.1587	0.0872	0.0887
minimum	4.73	3.63	3.94	3.87	4.71	3.63	2.58	3.26	3.45
maximum	5.8	4.21	4.73	4.5	5.88	4.53	3.63	3.86	4.27
range	1.07	0.58	0.79	0.63	1.17	0.9	1.05	0.6	0.82
skewness	0.3417	-0.1724	-0.3540	-0.7620	-2.0393	-0.2143	1.7110	-0.5095	-0.5965
kurtosis	-1.9999	-2.4982	-0.5529	-2.4389	4.2205	-1.8572	3.5763	-3.1713	1.4541
coefficient of variation (CV)	8.55%	6.58%	6.99%	7.12%	8.88%	9.44%	13.50%	8.25%	7.64%
1st quartile	4.9200	3.6500	4.1900	4.0300	5.6400	3.9100	2.8100	3.2600	3.8300
median	5.1200	3.9900	4.4200	4.4900	5.8000	4.1100	2.8400	3.7400	3.9500
3rd quartile	5.5700	4.0600	4.5200	4.5000	5.8700	4.5200	2.8900	3.7800	3.9900
interquartile range	0.6500	0.4100	0.3300	0.4700	0.2300	0.6100	0.0800	0.5200	0.1600
mode	#N/A	#N/A	#N/A	4.5000	#N/A	#N/A	#N/A	3.2600	#N/A