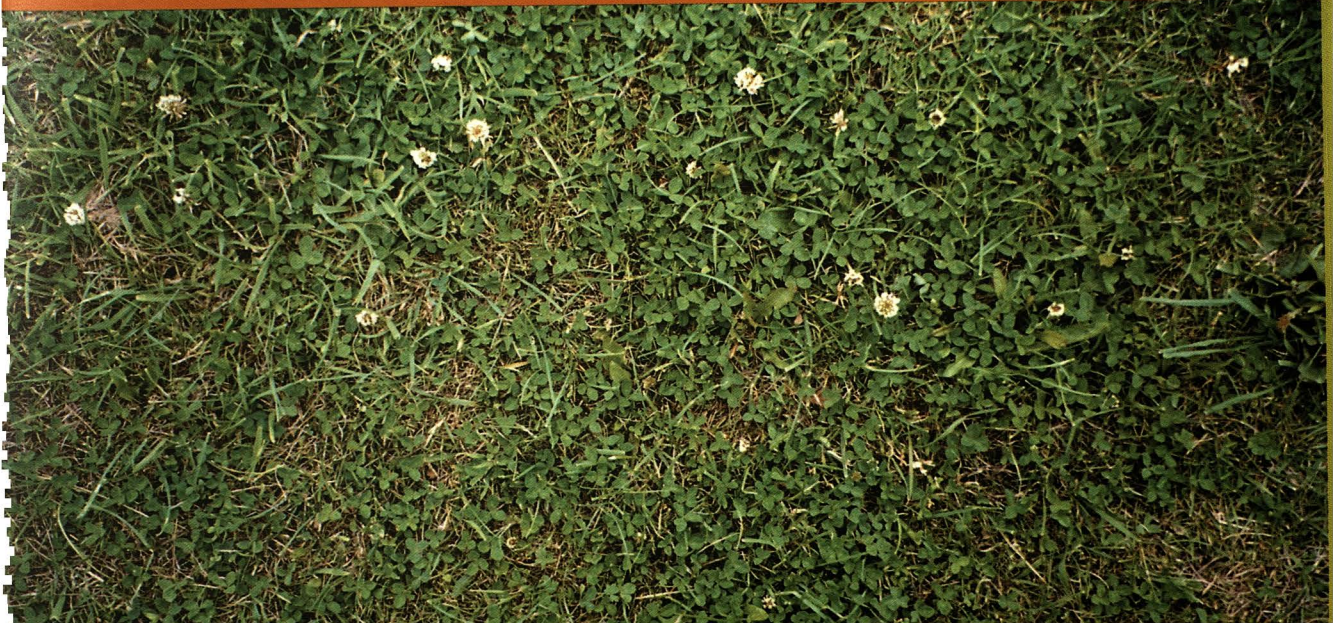


leeds irish health+homes
annual report

2001
2002



leeds irish health+homes
annual report

1. Chair's statement
2. Overview
3. Aims and objectives
4. Director's report
7. Support Services Managers report
8. Irish Elders Outreach Service report
10. Irish Health Outreach Service report
11. Leeds Irish Health and Homes Groups & Activities
12. Special Reports
14. Timeline of the year
16. Accounts
17. Thanks

contents

Leeds Irish Health and Homes Annual Report 2001–2002 Chair's Statement



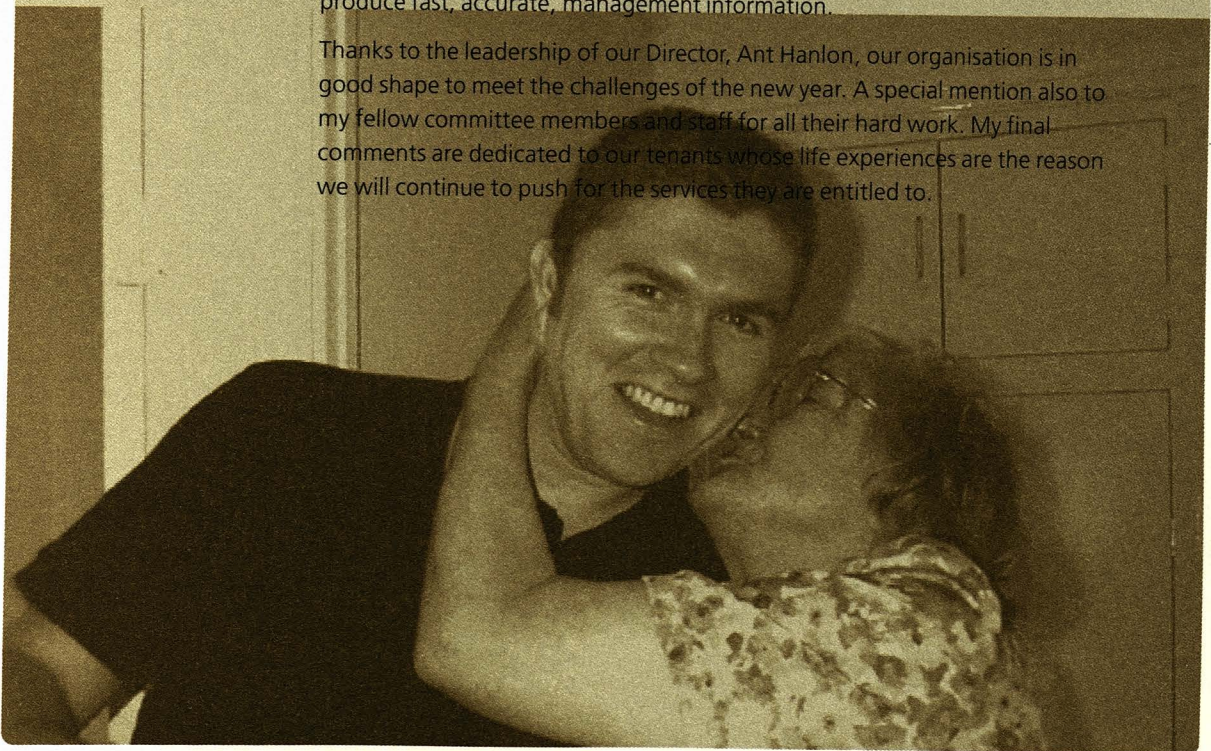
Mary Sheard
Chair

I am delighted to introduce Leeds Irish Health and Homes 2001/2002 Annual Report. In June 2001 we celebrated our 5th year as an organisation and I am pleased to be able to report that we have become specialists in culturally sensitive supported housing and outreach work.

Our video 'A Long Way From Home', made with funding from Leeds City Council, Leeds Community and Mental Health Services and Leeds Community Chest, and 'starring' our tenants and staff has been very well received. The Outreach Service is now firmly established. Our Women's Group goes from strength to strength. The core of our work – supported tenancies – continues to offer quality accommodation and support.

We see ourselves with a positive future. In the new year we will upgrade our computerised systems into a fully integrated package which will allow us to produce fast, accurate, management information.

Thanks to the leadership of our Director, Ant Hanlon, our organisation is in good shape to meet the challenges of the new year. A special mention also to my fellow committee members and staff for all their hard work. My final comments are dedicated to our tenants whose life experiences are the reason we will continue to push for the services they are entitled to.



This Annual Report is a celebration of the achievements that our staff and clients have made throughout 2001-2002.

Our History

Leeds Irish Health and Homes began as a steering group in 1992. The group recognised that the Irish community were over-represented in areas such as homelessness/inadequate housing and mental health referrals. We found that the Irish community were not accessing the support services that were available to them and to which they were entitled.

In 1996 the group received 9 months temporary funding from Leeds City Council for a Project Development Manager. Anthony Hanlon, now Director, started in this post with 8 tenancies.

The Present

In June 2001 we celebrated our 5th year as an organisation and have reached a total of 58 supported tenancies. The referral rates for the Elders Outreach and Health Outreach projects have increased significantly. In total we now provide continuous support for over 100 Irish people in Leeds.

We also provide one-stop advice on a variety of issues such as the pre-1953 pension. Throughout the year we have helped over 500 people from the Irish community.

A Communications and Fundraising role, a Finance Officer and new Housing Support Worker have been added to the team to deal with the demand for our services.

The Future

And, so here is to the future. Our hopes, dreams and aspirations for the coming year are entwined with the needs of our clients. We aim to be more responsive to the needs of Irish people living in Leeds who require support. We continue to ensure that our service goes from strength to strength and we hope that with support from us our clients can achieve new levels of happiness and fulfilment in their lives.

Leeds Irish Health and Homes Aims and Objectives

We will provide accommodation and associated support services to single Irish people who are homeless, insecurely housed and experience or are vulnerable to mental or physical ill-health.

We will support and assist our tenants to develop their skills for independent living.

We will bring to the attention of the wider public, the needs of the vulnerable Irish people.

We will raise awareness within the public and voluntary sector to the specific needs of the Irish people in terms of their housing and health needs.

We have a commitment to lobby for an Irish category in all ethnic monitoring.

We will act as an information exchange, providing a network for the various agencies concerned with Irish mental health issues.

We aim to establish a network of Irish people who are interested in the needs for culturally sensitive support and mental health issues surrounding Irish homelessness.

We aim to work in counteracting direct and indirect discrimination in the mental health service.

Our aim this year is to build upon the achievements of the past five years, recognising the invaluable feedback from the people who use our services in what they see are the things that they want from us.

Director's Report

At its inception LIHH's vision was to provide a quality housing support service to single Irish people to help combat isolation and poor health, without making judgements on the ways in which people dealt with the difficulties which life presented them.

Statistically, the health of the Irish community tends to fall below tolerable levels; but as we know Irish people in Leeds are not merely statistics.

During the past year, we have buried 2 of our tenants, Michael and Gerald; seen further people fighting debilitating illnesses and seen many others become frail before their expected time. When questions are asked as to why a specialist Irish support service is needed in Leeds, it is these human examples as well as the statistical information that show the need continues to exist.

This year, we have seen a 31% growth in the number of tenancies in our management to 58 units. We have managed to maintain an excellent voids and bad debts record again, at just over 3%.

Our Outreach Services are firmly established within the support structures of the city, and as you will read in the reports from staff, the rates of referrals to these services continue to grow.

We have been able to successfully achieve the goals set out in our Corporate Plan 2001-3, and are on target for completion of many of its recommendations within the time allocated.

We launched our video 'A Long Way From Home' to critical acclaim and hope that it becomes an accepted training tool for agencies when considering the needs of the Irish community.

I was also lucky enough to accompany a group of 9 of our tenants over to Mayo in September for a holiday, which was for many, the first time they had been home for over 20 years.

We also completed our first Tenant Aspiration Survey, which asked tenants what support they felt they needed to improve their lives. This has been a great source of information for us, directing some of the developmental work for the next year. Its most important message was that whilst a good quality home was nice for people, the chance to meet socially and overcome the isolation people feel was paramount.

All of this development has taken time and effort to achieve, and like many voluntary organisations, especially those representing a minority community, we have to face the ever-present worry of short-term funding, and have therefore had to plan ahead for this.

Our Outreach Services, despite a much appreciated increase in Dion funding last year, were threatened with closure because funding which ran out in April 2002, was not allocated until March 2002. This insecurity is an unacceptable situation for some of the most vulnerable members of our community who have come to rely on us as their only source of support.

In 2001 our Housing Service identified the pressing need to help people who needed more intensive support with their housing and health. Despite the lack of supportive funding, we developed 5 high-supported tenancies in order to firmly establish our 8-unit Health and Housing Scheme.

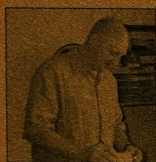
Our aim this year is to build upon the achievements of the past five years, recognising the invaluable feedback from the people who use our services in what they see are the things that they want from us. Our plans include being more responsive to the needs of carers, developing drop-in and advice facilities for the Irish community and further developing our provision of housing for older people.

The responsibility, which national and local government policy changes place upon us with 'Supporting People', Neighbourhood Renewal and the new Primary Care Trust structures, are immense. However, we will endeavour to seek the opportunity to achieve the most appropriate resource allocation for the Irish community, and hope that the opportunity the newly established Leeds Irish Community Forum presents can develop.

At LIHH we have a tremendously hard-working and committed staff team whose goal remains to help the people who use our services achieve the goals they want to. I would like to thank them for the effort, expertise and enthusiasm they display in all aspects of their work.

I am, as ever, constantly supported and encouraged by our management committee. Their vision continues to guide us in achieving the fulfilment of our goals.

This year is the first time that I can really thank people who work for us in a voluntary capacity. We have been able to develop volunteering opportunities recently, and the volunteers we have been able to use have been brilliant.



Anthony Hanlon
Director

My final thanks go to the people who use our services. Their trust, feedback and thanks mean a tremendous amount to us. This year we are aiming to improve tenant participation, which will help them to achieve a much closer relationship in influencing the decision-making and practice of LIHH.

"I have found peace in my life that I never thought was possible. I was living my life on the streets for so many years that I gave up hope of a normal life. I was living on the streets of London then I moved to Leeds and got myself a bed-sit. I lived there for four months. Then I was introduced to Leeds Irish Health and Homes and they got me my one bedroom flat. Now, thanks to Leeds Irish Health and Homes I am leading a normal life.



But the best part is I have a Housing Worker who visits me every week and makes sure that I am keeping in good spirit. Her name is Liz and if it wasn't for her concern about me I would not be in this position. I think I would be back on the streets again. I look forward to her visits every week. Liz and the staff at Leeds Irish Health and Homes do a very good job for all the tenants. I have settled down now. Thanks a million times over for what you have done for me in the past two years."

Albert, LIHH tenant

58

IF IT WASN FOR HER CONCERN

I THINK I WOULD BE BACK ON THE

STREETS AGAIN

I GAVE UP HOPE

OF A NORMAL LIFE

I WAS LIVING ON THE STREETS



Albert, LIHH tenant



"Leeds Irish Health and Homes do a really good job."
Florrie

Leeds Irish Health and Homes Support Services Managers Report

2001–2002 has been a successful year and we are now providing 58 supported housing units to single Irish people compared to the previous year when we had 44. This has shown an increase of 31% over the year. The increase in our Housing Service is a direct response to the demand we have from the Irish community. Since we began as an organisation in 1996 our supported tenancy units have increased seven-fold.

Our Housing Service also continued to provide high quality support to our clients. The ways in which we ensure this is through talking with our clients, drawing up support plans and reviewing these throughout the year.

Last year also saw the first year of our Tenant Aspiration Survey. This is our way of getting feedback from our clients about how they would like our service to develop. It enables us to focus on what else we can offer clients to complement our existing services.

2001–2002 saw the birth of our Health and Housing Scheme that will provide eight tenancies for people with higher support needs. We also expanded the areas where we offer housing and we continued to seek out better homes for our tenants.

The Elders Outreach and Health Outreach Services continue to increase their referral base and the last year has seen a significant increase in referrals from other health and social care agencies. As our reputation as a professional support and advice organisation grows, so the number of people using our service develops.

For the future we are continually seeking to provide services that respond to unmet and hidden needs. We aim to continue to provide a high quality service to our existing clients.

I would like to say a big thank you to all the staff and volunteers who work so hard throughout the year to help us provide such a high quality housing and support service to the Irish community. Your commitment and hard work is always recognised.

Finally I would like to say thank you to all of our tenants and clients who use our service. Without you there would be no service and it is great to be able to continually see the rewards of helping people live independently and benefit from services that they are entitled to.

People have become aware about the diversity of services that Leeds Irish Health and Homes offer.

Irish Elders Outreach Service Report

This past year has been a fulfilling and successful year for the Elders Outreach Service. I have been involved in numerous projects throughout the year.

Pre-1953 Pension/Benefits

Many of the referrals and enquiries I have dealt with revolved around people wanting to apply for the Irish pension and other benefits that they are entitled to. In total, we have helped over 100 people apply for the Irish pension in the last year. Many of these have been successful in getting the pension or other benefits and I hope that the extra money will be of help to them.

Holiday to Mayo

In September I accompanied a group of tenants on a trip to Ballinarobe, Co Mayo. Some of the group had not been home for over 20 years. It was a great experience seeing these people back home, bringing back memories, visiting places of interest and also meeting the President!

Irish Over 55's Day Club

The Day Club at the Montague Burton Resource Centre on a Friday continued throughout the year. Each week people in the Irish community come together to play bingo, listen to some Irish music and have lunch. During the past year we have also organised various activities. At Christmas we took all the people who attend the club out for a Christmas meal at a local venue. They have also been on a trip to Windermere, had various Irish musicians come to play live music and enjoyed a hearty bacon and cabbage lunch to celebrate St Patrick's Day. I would like to take this opportunity to thank the volunteers for their help each week. It is really appreciated.

Representing the Irish Community/Training

As part of my role I attend numerous forums city-wide that deal with issues that face the older generation. These include Leeds Older People's Forum and North East Leeds Dementia Forum. The benefit of sitting on these forums is that I can ensure that if there are any relevant issues in the Irish community then they can be heard. I also hold a 'drop-in' advice session at the Tuesday Club at the Irish Centre. This is on the last Tuesday of each month.

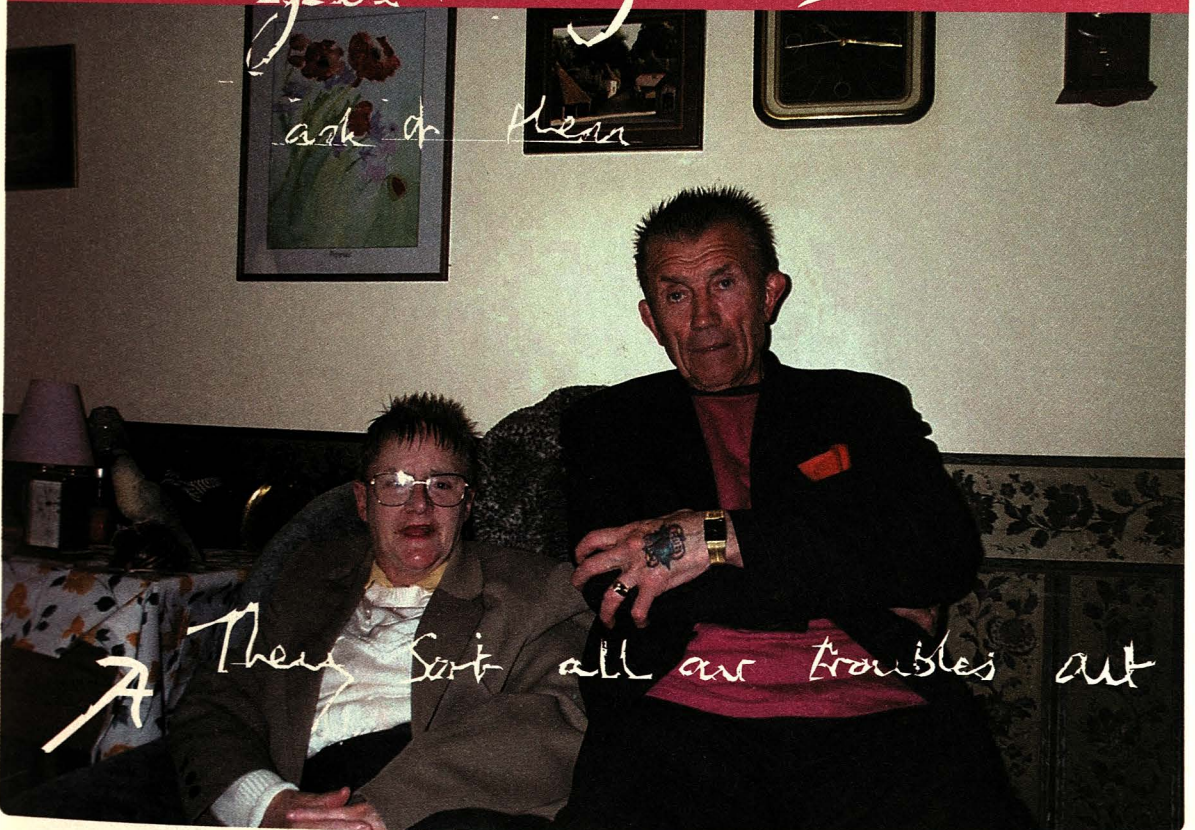
In this last year I have been on a number of training courses. The three main courses I have undertaken include training in counselling, a mental health course and bereavement counselling.

I feel that over the last year more people have become aware about the diversity of services that Leeds Irish Health and Homes offer. Most of the referrals I get are self-referrals or from a family friend or relative. I have found that once I have helped a person with one enquiry they will contact me again when they have other problems or enquiries.

I find my job very rewarding and satisfying. I would like to think that the work that I do here at Leeds Irish Health and Homes helps to improve the quality of older Irish people's lives enabling them to remain living as independently as possible in the community.

*They provide help
with
just anything
ask of them*

"Leeds Irish Health and Homes provide great accommodation. They will help you with anything you ask of them. They sort all our troubles out."
Jim and Veronica



A They sort all our troubles out

The service has become well known within the community and amongst other services and professionals.

Irish Health Outreach Service Report

The Health Outreach Service has, since its inception in November 2000, established itself within Leeds Irish Health and Homes as an intermediary between the more intensive support offered by the Housing Team and the statutory and other voluntary support networks within Leeds.

The post took some time to develop, as there was no precedence within Leeds for 'floating support' within the Irish community. The lack of established links or structures meant that the initial groundwork of making other agencies aware of the service and the highlighting of its existence amongst the wider Irish community took some time. Nonetheless the initial targets set by the funders, Health Action Zone, were met in all cases and in many instances exceeded.

The number of clients that I worked exclusively with in 2001–2002 numbers 47, of which 32 (68%) are male and 15 (32%) are female. The difference in referral rates between men and women were to be expected and broadly mirrors the experiences of the other branches of the organisation.

The greater number of referrals have been received from the North East and East Primary Care Trust areas, again given that this is the physical area in which most of our bases are situated this is unsurprising. Reasons for referral vary widely, though by far the greatest number of people are referred with mental health problems. This is followed by referrals for housing, support around isolation, the elderly Irish and help for those with alcohol/drug problems. There have been many sources of referrals, which have included social services, health, drug and alcohol services, friends and family and probation. There have also been a number of self-referrals.

In all the service has become well known within the community and amongst other services and professionals. Those using the service usually appreciate having support from an Irish organisation and in most cases the support offered has complemented well that offered by other agencies.

My role also involves writing a report on the Irish community and their health situation in Leeds. This is due to be published in the next financial year.

For the following year we expect the Health Outreach Service to continue to expand into other areas of the city where there is substantial Irish population but currently limited referrals.

Leeds Irish Health and Homes Groups and Activities

Leeds Irish Women's Group

The Women's Group started in 1998 and now has a membership of about 12 women. The meetings happen once a month in one of the members' homes and are very informal and are more like your friends popping around than meetings. Over the last year the women have organised various activities including a trip to France, a trip to Amsterdam, a trip to the Christmas market in Lincoln. They have also enjoyed day trips to Bridlington and Scarborough. Leeds City Council Community Chest and Leeds Mind have provided funding for this group.

Irish Over 55's Day Club

The Day Club began back in 1999 and has continued to grow and develop over the last year. Everyone that attends enjoys activities such as bingo, raffles and live music each week. Currently we have about 20 people each week that see it as a chance to get together, have a chat and meet new people in a lunch atmosphere. We have received funding for 2002–2003 from Leeds City Council so this allows us to continue this needed service in the community.

Developments for the next year:

Movie Club

Over the next year Leeds Irish Health and Homes would like to expand the numbers attending it's Movie Club. This happens once a month and is open to anyone in the Irish Community that would like to get out of the house and watch a film for free.

Activities Club

A key need that was identified in our Tenant Aspiration Survey was the number of requests for an Activities Club. We are aware that many people often only socialise when an organised group activity is arranged. Over the next year we will be investigating sources of funding for this and hope to get something up and running in the next year.

Carers Group

One of the key areas that Leeds Irish Health and Homes has noticed as an unmet need is the number of carers in the Irish community who do not get any support or a chance for some respite from caring. With this in mind we have recently applied for funding for some individuals to be able to follow a hobby or go on a trip together. We are hoping that if we receive this funding then we can begin to get people to meet in an informal atmosphere and provide support and enjoyment for each other.

Raising awareness about the specific needs of the Irish community.

Special Reports

Survivors of Institutional Child Abuse

There has been a lot of publicity and information in the public domain over the last year about the impact of physical, verbal and mental abuse that people endured in some of the institutions in Ireland. Leeds Irish Health and Homes recognises the sensitivity of this subject and we are aware of the need of people to be able to talk about their experiences and claim compensation from the Irish government if they so wish. Many claims are currently going through and we have been working with the Yorkshire Outreach Worker, Eileen Burns, who is based at the Sheffield Irish Forum. Hopefully with time and support more people will begin to feel comfortable about asking for the support and advice that is available.

Pre-1953 Irish Pension

Many people who worked in Ireland prior to 1953 are now entitled to receive a pension from Ireland. Our Outreach Workers have helped over 100 people access forms, fill them in and appeal if necessary. This advice service is offered at our offices or in people's homes. A development from this advice service has been that once we have helped people on this issue we have gained a level of trust that allows us to help people access other services or benefits that they are not currently aware of.

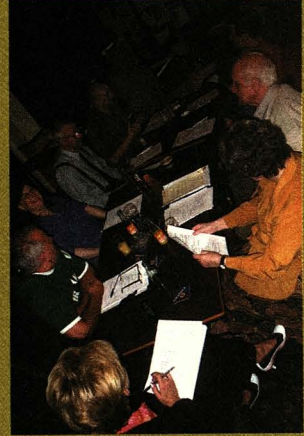
'A Long Way From Home' The Irish Community in Leeds

Leeds Irish Health and Homes received £10,000 in funding from Leeds City Council, Leeds Community and Mental Health Services and Leeds Community Chest to bring together a video documentary that explored the Irish community in Leeds. This included their culture, their experiences of emigration and the situation of some of the Irish community in the present day.

The launch of this video in February not only increased sales but also helped us fulfil one of our key objectives. This is to raise awareness within the public and voluntary sector about the specific needs of the Irish community in terms of their housing and health requirements. We would like to record our thanks to Jan Wells, Don and Liz Atkinson, Clodagh Dowling, Jill Donnellan and Martin Belderson. Following on from the launch we have also had approaches from other key individuals and groups in Leeds about developing further projects around documenting the Irish experience in Leeds.

St Patrick's Day parade
Leeds 2002

Meeting of the Irish
Community Forum at
Leeds Irish Centre



Task Force on Emigration/Irish Community Forum

In January 2001 the Irish government commissioned a Task Force to develop policy on issues facing emigrants. As part of this LIHH were asked to conduct a public consultation.

Following on from a successful open forum at Leeds Irish Centre the Task Force actually visited Leeds Irish Health and Homes in March 2002. They requested that as many areas of the Irish community were represented, and so we had people from Huddersfield and Newcastle, as well as local representatives from the Irish community in Leeds. The findings of their research can be accessed on the internet at www.irlgov.ie/iveagh.

There was an inaugural meeting of Leeds Irish Community Forum in March 2002. This was in response to the needs, especially for the older Irish generation, that were discussed at the open forum. These included support, transport, mobility problems, isolation and loneliness. The Forum hopefully will continue to strengthen over the coming year.

Holiday to Mayo

In September 2001 9 tenants of Leeds Irish Health and Homes made a trip to Ireland. This was arranged with help from the Mayo Emigrant Liaison Committee. The trip was a huge success and allowed many the opportunity to return home to Mayo. In light of the success of this trip we are hoping to raise funds independently for another trip to Sligo in the near future.



"Leeds Irish Health and Homes mean everything to me. When I came to Leeds I had nothing and was sleeping in a hostel owning only the clothes I was wearing. With ongoing support from Leeds Irish Health and Homes they offered me a chance to change my life. I now have my own home, my own scooter and car to help with my mobility and lots of friends. But Leeds Irish Health and Homes are my family."

Ted, LIHH tenant

Raising awareness about the specific needs of the Irish community.

Special Reports

Survivors of Institutional Child Abuse

There has been a lot of publicity and information in the public domain over the last year about the impact of physical, verbal and mental abuse that people endured in some of the institutions in Ireland. Leeds Irish Health and Homes recognises the sensitivity of this subject and we are aware of the need of people to be able to talk about their experiences and claim compensation from the Irish government if they so wish. Many claims are currently going through and we have been working with the Yorkshire Outreach Worker, Eileen Burns, who is based at the Sheffield Irish Forum. Hopefully with time and support more people will begin to feel comfortable about asking for the support and advice that is available.

Pre-1953 Irish Pension

Many people who worked in Ireland prior to 1953 are now entitled to receive a pension from Ireland. Our Outreach Workers have helped over 100 people access forms, fill them in and appeal if necessary. This advice service is offered at our offices or in people's homes. A development from this advice service has been that once we have helped people on this issue we have gained a level of trust that allows us to help people access other services or benefits that they are not currently aware of.

'A Long Way From Home' The Irish Community in Leeds

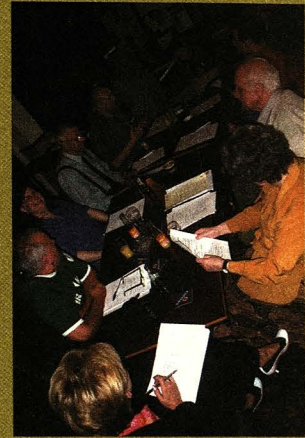
Leeds Irish Health and Homes received £10,000 in funding from Leeds City Council, Leeds Community and Mental Health Services and Leeds Community Chest to bring together a video documentary that explored the Irish community in Leeds. This included their culture, their experiences of emigration and the situation of some of the Irish community in the present day.

The launch of this video in February not only increased sales but also helped us fulfil one of our key objectives. This is to raise awareness within the public and voluntary sector about the specific needs of the Irish community in terms of their housing and health requirements. We would like to record our thanks to Jan Wells, Don and Liz Atkinson, Clodagh Dowling, Jill Donnellan and Martin Belderson. Following on from the launch we have also had approaches from other key individuals and groups in Leeds about developing further projects around documenting the Irish experience in Leeds.

St Patrick's Day parade
Leeds 2002



Meeting of the Irish
Community Forum at
Leeds Irish Centre



Task Force on Emigration/Irish Community Forum

In January 2001 the Irish government commissioned a Task Force to develop policy on issues facing emigrants. As part of this LIHH were asked to conduct a public consultation.

Following on from a successful open forum at Leeds Irish Centre the Task Force actually visited Leeds Irish Health and Homes in March 2002. They requested that as many areas of the Irish community were represented, and so we had people from Huddersfield and Newcastle, as well as local representatives from the Irish community in Leeds. The findings of their research can be accessed on the internet at www.ir.gov.ie/iveagh.

There was an inaugural meeting of Leeds Irish Community Forum in March 2002. This was in response to the needs, especially for the older Irish generation, that were discussed at the open forum. These included support, transport, mobility problems, isolation and loneliness. The Forum hopefully will continue to strengthen over the coming year.

Holiday to Mayo

In September 2001 9 tenants of Leeds Irish Health and Homes made a trip to Ireland. This was arranged with help from the Mayo Emigrant Liaison Committee. The trip was a huge success and allowed many the opportunity to return home to Mayo. In light of the success of this trip we are hoping to raise funds independently for another trip to Sligo in the near future.



"Leeds Irish Health and Homes mean everything to me. When I came to Leeds I had nothing and was sleeping in a hostel owning only the clothes I was wearing. With ongoing support from Leeds Irish Health and Homes they offered me a chance to change my life. I now have my own home, my own scooter and car to help with my mobility and lots of friends. But Leeds Irish Health and Homes are my family."
Ted, LIHH tenant



Timeline of the Year

April 2001:

Leeds Irish Women's Group receive £2,000 funding for their group from the Health Action Zone towards a programme of exercise and alternative therapies.

May 2001:

David O'Leary donates a signed Leeds United shirt to auction for the annual trip to Ireland.

June 2001:

Dion Committee increase funding to Leeds Irish Health and Homes for a new Housing and Outreach Support Worker.

July 2001:

Leeds Irish Health and Homes run an Elders Information Roadshow at the Irish Centre. This is big success with over 70 people attending and asking for advice.

August 2001:

32 tenants go out on the annual summer trip to Ripon Castle.

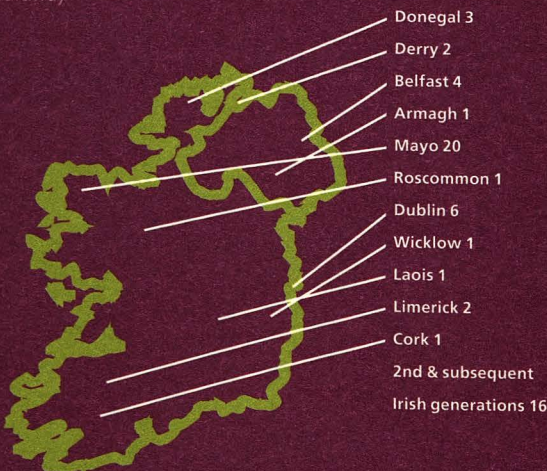
September 2001:

9 tenants go back to Mayo on holiday for a week. Many have not been back for 20 years or more.

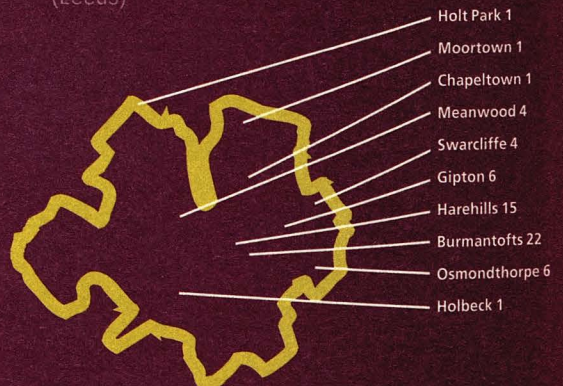
October 2001:

Leeds Irish Health and Homes hold "Green White and Almost Visible" seminar. This was chaired by Bill Killgallon, Chair, NHS Leeds Hospital Teaching Trust. 60 people from health and social care agencies in Leeds attended this one-day seminar about the Irish community. It highlighted the fact that the Irish community was as an ethnic minority but often forgotten about.

Breakdown of tenants by place of birth (Ireland)



Breakdown of tenancies by location (Leeds)





November 2001:
Development starts on our Health and Housing Scheme for people with higher support needs.

December 2001:
Our Tenants Christmas party was held at The New Roscoe, Regent Street. Nearly all of our tenants turned up for a lunch buffet with live Irish music.

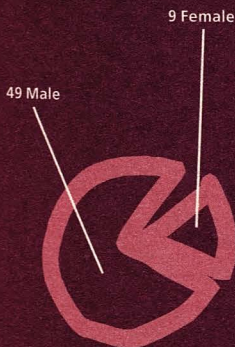
January 2002: Task Force regarding the Policy on Emigration. Leeds Irish Health and Homes held a meeting at Leeds Irish Centre in response to the Irish Governments request for information from emigrants living in the UK about issues they face.

February 2002:
Official launch of 'A Long Way From Home' The Irish Community in Leeds. This was held at Leeds Metropolitan University in conjunction with the Certificate of Irish Studies course.

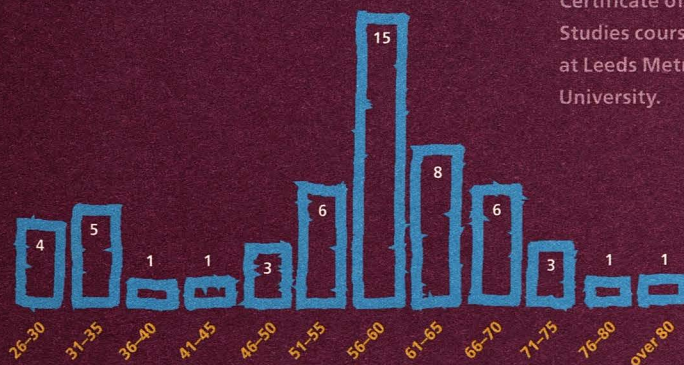
March 2002:
Bacon and Cabbage Lunch. To celebrate St Patricks Day the members of the day club had a hearty bacon and cabbage lunch with live Irish music.

Re-launch of news-
letter 'Irish in Leeds'. In March 2002 Leeds Irish Health and Homes re-launched the Irish in Leeds news-letter. For this first edition there was a circulation of 1000, covering topics such as the development of the Irish Community Forum and a review of the Certificate of Irish Studies course on offer at Leeds Metropolitan University.

Male to female tenants ratio



Breakdown of tenants by age group



16/ LIHH would like to record our thanks to Bartfield & Co. who have audited the full accounts for 2001/2002. The Auditor's opinion was unqualified and the Management Committee approved our accounts on 22nd July 2002. A full set of accounts can be obtained from LIHH.

Leeds Irish Health and Homes Limited Accounts

Income and Expenditure Account for the Year ending 31st March 2002

	2002	2001
	£	£
TURNOVER	406,195	304,802
LESS OPERATING COSTS	445,457	296,459
OPERATING (DEFICIT)/SURPLUS)	(39,262)	8,343
INTEREST RECEIVABLE	1,777	1,884
(DEFICIT)/SURPLUS ON ORDINARY ACTIVITIES FOR THE YEAR	(37,485)	10,227
TRANSFER (TO)/FROM RESTRICTED RESERVES	16,725	(3,707)
TRANSFER (TO)/FROM DESIGNATED RESERVES	11,921	-
(DEFICIT)/SURPLUS FOR YEAR (FROM)/TO GENERAL RESERVE	(8,839)	6,520
GENERAL RESERVE BROUGHT FORWARD	9,606	3,086
GENERAL RESERVE CARRIED FORWARD	767	9,606

Balance Sheet as at 31st March 2002

	2002	2001
	£	£
FIXED ASSETS		
TANGIBLE ASSETS	12,777	8,435
CURRENT ASSETS		
DEBTORS	15,386	5,140
CASH AT BANK AND IN HAND	42,651	94,539
CREDITORS: AMOUNTS FALLING DUE WITHIN ONE YEAR	(29,654)	(29,467)
NET CURRENT ASSETS	28,383	70,212
TOTAL ASSETS LESS CURRENT LIABILITIES	41,160	78,647
CAPITAL AND RESERVES	11,921	-
SHARE CAPITAL	10	12
RESERVES		
RESTRICTED RESERVES	1,304	18,029
DESIGNATED RESERVES	39,079	51,000
GENERAL RESERVE	767	9,606
	41,150	78,635
Auditors: Bartfield & Co., Burley House, 12 Clarendon Road, Leeds, LS2 9NF	41,160	78,647
Bankers: Bank of Ireland, 31 King Street, Leeds, LS1 2HL		
Accountants: PC&Co, 81a Town Street, Armley, Leeds LS12		

List of Management Committee members 2001–2002

Mary Sheard	Chairperson
Clodagh Murphy	Vice-Chairperson
Mel Nally	Treasurer
Aggie Nothard	
John Melaugh	Resigned 4 June 2001
Peter McHale	
Gary Burns	
Patrick O'Connor	
Brigid O'Callaghan	
Clare Whelan	
Seamus O'Mahony	Resigned 4 June 2002
Sínead Cregan	

Leeds Irish Health and Homes staff

Ant Hanlon	Director	Appointed June 1996
Mary Baillie	Support Services Manager	Appointed April 2000
Karen Mallon	Housing Support Worker	Appointed April 1998
Shelagh Fallon	Housing Support Worker	Appointed Feb 2001
Liz Williams	Housing Support Worker	Appointed Jan 2002
Kevin Ponting	Housing Support Worker	Resigned Nov 2001
Caroline Murphy	Elder Outreach Worker	Appointed Sep 1999
John O'Dwyer	Health Outreach Worker	Appointed Nov 2000
Anna Dunne	Communications & Fundraising Officer	Appointed Dec 2001
Andrew Rabbitt	Finance and IT Officer	Appointed Jan 2002
Enda Sheridan	Administrative Worker	Appointed Jan 2001
Janet Stephens	Administrative Worker	Resigned Oct 2001

Thanks

Leeds Irish Health and Homes would like to say a big thank you to all those who have provided funding and donations over the last year.

Leeds Community and Mental Health Trust
Leeds City Council
Resourcing the Community
Leeds Health Authority
Dion
Ireland Fund of Great Britain
Health Action Zone
Tudor Trust
Leeds Social Services
Leeds Mind Mental Health (Drop-in and Outreach Scheme)
Leeds Community Chest
Wades Charity
Allied Irish Bank
Leeds Metropolitan University (Certificate of Irish Studies students)
Leeds Irish Centre (Tara Suite)
Leeds Irish Centre

K.Lennon
E.F. McKenna
J. Devaney
J.Grealis
P. Mundy
H.Inge
J&E Hallinan
S. Fallon

A special thanks to Des Hurley of Harehills Irish Music Project for his continued support and music sessions over the last year.

Also thank you to Corinne Nicholson for her photographic work throughout the year. Corinne has been working closely with the Irish community in trying to capture and record their experiences and culture. Corinne is currently applying for funding to develop an Irish Heritage Project in Leeds. For more details about Corinne's work you can contact her on 07816 072132.

Graphic design: Andy Edwards, Leeds.

LIHH would like to dedicate this publication to the memory of two tenants who died this year, Michael and Gerald. They were two wonderful people and will be remembered with affection.



Top row (left to right):
Ant Hanlon,
Mary Baillie,
Shelagh Fallon, Karen Mallon,
John O'Dwyer

Bottom row (left to right):
Liz Williams, Anna Dunne,
Caroline Murphy,
Andrew Rabbitt