

IRISH IN LEEDS

PUBLISHED BY LEEDS IRISH HEALTH AND HOMES



Hello everyone,

We hope you enjoyed the November edition. Doesn't time fly as we gear up for another fun-packed St Patrick's Day. More details about the parade and events on the day are on the back page.

This newsletter is edited by Leeds Irish Health and Homes. While it is a vehicle for us to let you know about the services we offer, we hope that it is becoming a well-established community newsletter.

So if you have any suggestions, questions or articles that you would like to see printed please drop us a line at :

335 Roundhay Road

Leeds

LS8 4HT

Email:

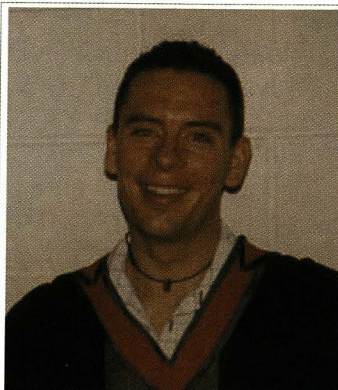
anna@lihh.org

Hope you enjoy reading!

Anna Dunne

Communications Officer

Could your life story hold the key to an Irish based MA study?



Brendan McGowan was born in Leeds in 1976. At the age of three his family moved back to Mayo where his maternal grandparents come from; his father hails from Donegal. (His grandparents held 'The Regent' on Regent Street in the 70s).

Now Brendan is back in Leeds using this city and its Irish population as a base for his MA study.

The study is about Irish emigrants to Leeds between 1921-1981 and their differing experiences. Brendan has already been in contact with the various Irish organisations in Leeds such as the Irish Centre, Mount St Mary's Historical Group and Leeds Irish Health and Homes.

Now Brendan needs your help. Brendan is looking for volunteers to be part of his study. He would like to come along and talk to you about your experiences of emigration and settlement in Leeds. He is looking for a wide range of people to participate and he is hoping in turn to get a variety of recordings about the good and bad sides of emigration.

Brendan highlighted at our last meeting, "All too often the history of 20th century Irish emigration to Britain has been written in terms of government reports, census data and newspaper articles. It would seem that the most obvious and reliable source of the emigrant's own experience is often overlooked. I hope to address this imbalance."

If you do decide you would like to part in this study Brendan assures people that no names will be used in the final document. The only details that will remain the same will be your year of birth and the county that you hail from in Ireland. So if you are interested in telling your life story to Brendan you can contact him either by

Phone: +00353874106393

Post: 47 Churchfields, Lower Salthill, Galway, Ireland.

Email: nadnerbmc@hotmail.com

Brendan will be back in Leeds from April 2nd-April 10th so why not give up some of your time to talk to Brendan to give him the material his thesis needs. Do not underestimate your story. Everyone's life history is important so take this opportunity to get it recorded.

COMPENSATION FOR SURVIVORS OF CHILDHOOD ABUSE

Survivors of institutional childhood abuse have campaigned for recognition and compensation for a number of years. The Dail Eireann (Irish Parliament), has recognised the needs of survivors and passed the Redress Act on 10 April 2002 enabling survivors of abuse to claim redress (compensation).

Residential institutions for children include Industrial and special schools, children's homes, orphanages, schools for the deaf, orthopaedic hospitals and Magdalene laundries.

Abuse has many forms - sexual, physical and emotional, together with neglect, injury and loss of opportunity. Physical and psychological injuries that the children sustained can stay with them all through their lifetime and can cause illness in later life.

Many children left the institutions with little or no ability to read or write and as a result employment opportunities were limited. Some children were put into institutions by order of a court automatically giving them a criminal record even though they had not committed a criminal act. Having such a record meant that certain opportunities could not be pursued e.g. police, hence loss of opportunity is

acknowledged as a legitimate claim for redress purposes.

To make a claim for redress an application has to be submitted within the next three years to the Redress Board. The amount of redress awarded is linked to the abuse suffered and can vary from 1000 to 300,000 euros.

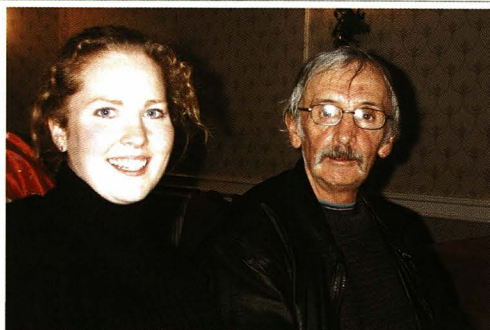
Eileen Burn and Julie Butcher of the Sheffield Irish Survivors Service (SISOS), which is part of CARA and is located in CARA's Yorkshire Office, works with adult survivors of residential institutions. Eileen and Julie can give information on redress and how to apply. They can also provide details on the Commission to Inquire into Child Abuse (IRL 2000), the Freedom of Information Act (IRL 2000) and family tracing.

Eileen and Julie can be contacted on 0114 221 0481. Alternatively write to them at:

CARA Yorkshire
The Workstation
15 Paternoster Row
Sheffield
S1 2BX

SISOS is a confidential service.

LIHH Christmas Party - Clients enjoy a day at The Mansion

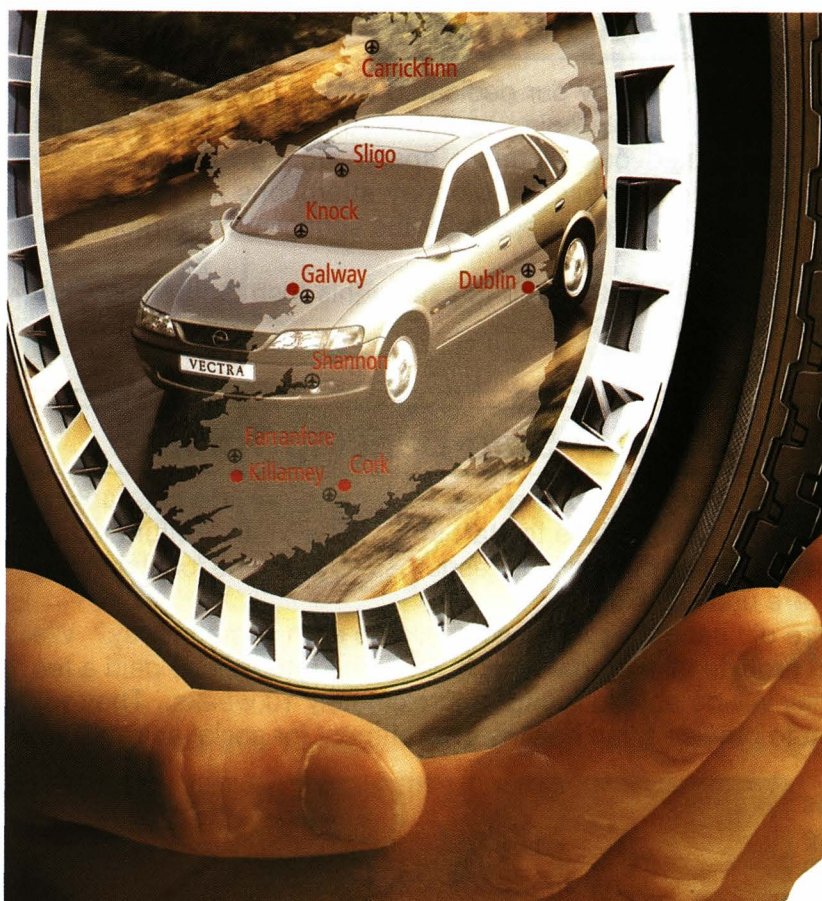


St Patrick's Day Poem contributed by John Aherne

Through Erin's Isle
To sport a While
Through love with value wander
With wit sprite
For quivers bright
A thousand arrows squander.

Where aire they pass
A triple grass shoots up
With dewdrops streaming
As softly green as emerald seen
Through purest crystal gleaming.

O the Shamrock,
The green immortal shamrock
Chosen leaf of bard and chief
Old Erin's native shamrock.



*Ireland in the
palm of your hand
with...*

AVIS®

For reservations to Ireland call

**0870
60 60 100**

or book online @ www.avis.co.uk

FUNDING UPDATE

Leeds Irish Health and Homes has been very busy over the last few months applying for funds. Our service relies on various funding streams and it is only in this way that we can successfully run our core services and groups such as Leeds Irish Carers Group and Leeds Irish Womens' Group.

Recently we have received a grant of £43,500 from **Heritage Lottery Awards** to develop an Irish Community Archive for the Irish Community in Leeds. This funding only provides half the desperately needed funds and so we are currently looking at matched funding routes that we can access. More information about this on Page 7.



Microsoft Ltd donated £250 worth of software to us in January.

CEE MEE Garden Contractors (0113 269 3201) kindly donated a lawnmower for our Allotment group.

Leeds Health Action Zone has funded us to start running a Men's Health Group.

Leeds Social Services have given us £300 towards the development of Leeds Irish Carer's Group.

Community Chest has given us £3,000 to run the Leeds Irish Community Forum. More details on Page 6.

We are always looking for people to help us raise funds to support the services we provide in the Irish Community. If you have any ideas or would like get involved in helping organise a fundraising group please contact Anna Dunne on 0113 240 1130 or via email anna@lihh.org.

LEEDS IRISH HEALTH AND HOMES GROUPS

Gardening Group



The gardening group is being kept alive by our dedicated worker John Reape at the moment. We assume the lack of people going to the allotment is due to the cold weather. John however has turned our allotment space around and would like people to start to wrap up warm and join him on Monday afternoons for a couple of hours to start to keep the allotment tidy and prepare for the spring/summer months.

So if you are a client or you would be interested in joining this Irish Gardening Club please call John Reape on 0113 240 1130.

Leeds Irish Women's Group appeals for Step-Dancing Tutors

In our last issue we were delighted to announce that we had received funding to provide set-dancing lessons for Irish women and that we hoped they would be able to start in the New Year. Unfortunately we are having trouble finding a tutor. We have tried all the obvious resources such as the local dancing schools but due to other commitments they are unavailable.

So do you know of anyone who knows all the old set dances and would like to earn some money? We are looking for a tutor, of any age, who can provide all their own music etc. The tutor will be paid a fee for holding the classes and we hope that they will be able to run for approximately 10 weeks. They will be open to all Irish women in Leeds and aim to provide a fun healthy environment for social activity.

If you feel you could help us run this class or you know of someone who might be able to help please call Karen Mallon on 0113 240 1130 as soon as possible.



LEEDS IRISH CARERS GROUP

Leeds Irish Carers Group has gone from strength to strength since it started back in October 2002. We now have regular monthly meetings on the first Monday of every month at Leeds Irish Health and Homes offices incorporating lunch and often a guest speaker.

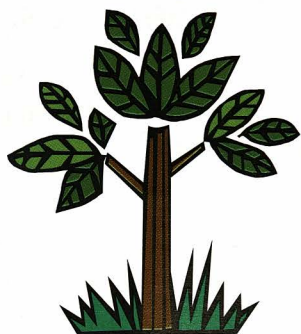
So far the Group have been out for a Christmas meal together, had a guest speaker from Leeds Carers Centre about support and benefits you can receive as a carer and in March they are off to West Yorkshire Playhouse to see 'Once Upon A Time in Wigan'. All of these activities are funded by various sources such as BME Pilot Grants Scheme—Carers Group.

The next meeting is on **Monday April 7th at 12pm at Leeds Irish Health and Homes** offices and the group welcomes new people.

So are you a mother, father, husband, wife, partner, brother, sister or friend and find you care for someone with physical or mental health difficulties? Would you like to come and meet with other Irish people who are experiencing the same thing as yourself? The Irish Carers Support Group is an informal group and we hope that the people who attend will shape how the group develops.

For more information please contact Mary Baillie at Leeds Irish Health and Homes on 0113 240 1130 or mary@lihh.org.





Ebor Gardens Advice Centre

*Giving free and confidential advice and help to
the local community.*

***We will help you by providing
advice and help on a wide range
of issues –***

Benefits – Debt – Housing – Consumer – Employment

Visit the centre at: 173 Haslewood Drive, Leeds, LS9

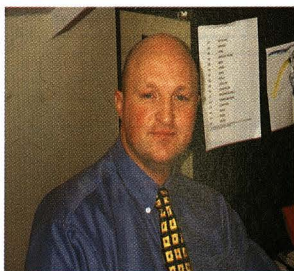
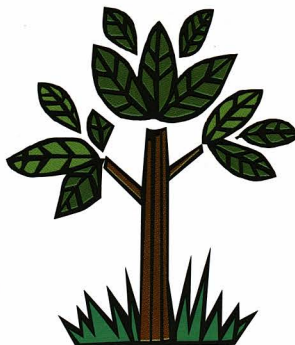
OPEN: Mon – Weds – Fri. 9.30 – 1.30

TEL: 2350276 for advice or details of local surgeries.

**If you are ill, disabled or frail and cannot get to the centre, we can arrange for
an adviser to call at your home.**

A Burmantofts Community Project. Reg. Charity No: 105 1368. Co. Reg. No: 3061633.

Supported by the Community Fund.



Director's Note Implications of the new 'Supporting People' initiative

As of 31st March 2003, the rules governing the funding which enables people to live independently in their own home will change.

Traditionally, people have been able to claim housing benefit when living in 'supported housing' and this has paid for both their accommodation and the support they receive. All too often people didn't have choice about the type of support they received or the length of that support, as this was tied in with the type of accommodation they lived in, such as a flat, a hostel, residential or sheltered home. The new 'Supporting People' initiative has been designed to increase choice and allow the support to move with the person, thereby helping people to maintain as independent a life as possible. As with any change in legislation, it puts pressure on organisations to meet new standards and codes of practice, and as with most things in life, if your organisation is small, then these demands can be extremely time-consuming and threatening to your long-term future. Many small providers in Leeds have therefore developed links with each other to see how they can

support each other. We have established links with other Irish providers here also.

The opportunity within 'supporting people' is to develop 'floating support schemes' for people who may only need support for a short time. When someone no longer needs the support, the support simply 'floats away' to another individual. The 'Supporting People Strategy for Leeds' has recognised that there is a lack of housing support currently available for older people and people with mental health problems. As we are aware, there are members of our community for whom this type of support would be extremely beneficial in order to stop isolation and poor health. At Leeds Irish Health & Homes, we are committed to ensuring that members of the Irish community who require such support should have services available which meet their needs in a culturally sensitive way. We are readying ourselves to meet the demands of this initiative and to develop services which Irish people feel they want in order for them to maximise their independence.

If you have any queries that you want to raise about this, please contact Ant Hanlon on 0113 2401130.



NAME: Caroline Murphy

ORGANISATION:
LIHH Friday Day Club

WHERE: Montague Burton
Resource Centre,
Banstead Street West
(just off Roundhay Road)

ESTABLISHED: 1998

WHY: My main role is as an Elders Outreach Worker visiting people in their homes. It came to my attention that the majority of my clients were socially isolated and so we started the Friday Day Club. We now have about 30 members who come down, have lunch together, listen to some Irish music and have a game of bingo.

HIGHLIGHTS: Special days such as St Patrick's Day and Christmas time make you realise how important the club is to people who like to celebrate with other Irish people.

FRUSTRATIONS: Many of our clients are not fully mobile and I know there are many more that would love to come but have difficulty with transport. It would be great to have some volunteers to help with lifts or some form of transport so every one who wanted to could access the service.

HOPES FOR THE FUTURE: I hope that the Friday club continues to go from strength to strength and continues to remain a Irish social afternoon for many years to come.

CONTACT DETAILS:

Phone: 01132401130

Email: caroline@lihh.org

Leeds Irish Health and Homes - Our Services

- Are you Irish or of Irish descent?
- Are you at risk of isolation, homelessness, or have ongoing physical or mental health problems?
- Are you in need of support or advice?

Our organisation offers the following services:

- **Supported Housing Service**—providing fully furnished single tenancies and ongoing support, tailored to suit individual needs.
- **Irish Elders Outreach Service**—provides associated advice, information and support to older Irish people living in Leeds. An over-55's Day club also runs weekly for those who may feel isolated and want to meet new people.
- **Health Outreach Service**— provides short and long-term support around a wide range of health issues.

We also have access to Leeds Irish Women's Group which organises monthly meetings and social activities for Irish women.

Anyone who wants advice or support can refer themselves to us, or alternatively a relative or a professional such as a GP or Social Worker can refer clients.

We are happy to make house visits so call us today on 0113 240 1130.

LEEDS IRISH COMMUNITY FORUM

In previous issues you may remember the start of Leeds Irish Community Forum. The aim of this group was to bring together all the various groups in the Irish Community dealing with sport, music, culture and welfare services. The group was developing well but unfortunately the administrative costs that were ensuing from the meetings were not being funded.

Fearing that this open forum would stop Leeds Irish Health and Homes put in a funding bid to Community Chest and we have received £3,000 to run the LICF again. This money will pay for refreshments/admin costs and any open days etc we would like to run.

So we start again with our first funded meeting on April 3rd — 7pm at Leeds Irish Centre in the O'Meara Suite. A letter will be sent out nearer the time reminding people who attended the last meetings. It would be great to see some new faces. Please remember this is not just open to groups - we would like to encourage individuals to come along and express concerns and ideas that they may have. It is a very informal meeting with an open question session. The people attending set the agenda!

If you would like to attend please call Paula McCullough on 0113 240 1130 and let her know so we can arrange refreshments.

'Memories of Change' - The Leeds Irish Community Archive

The delight of receiving £43,500 of funding quickly turned to agony as we realised that we would have to find a further £43,500 before the project could even begin. This is a normal day-to-day problem faced by a fundraiser but this is not going to put us off. Two more funding applications are awaiting decisions and now we turn to the Irish Community to help us make our archive become a reality.

An open presentation will be taking place at the Leeds Irish Community Forum (see Page 6) meeting on April 3rd at the Irish Centre. If you are interested in finding out more about the what the project entails and what funding remains outstanding then please do come along to pose your questions to us or provide your support.

This is the first opportunity since we received the funding that we have had to fully inform the community of our plans. We are now looking towards sponsorship

to make this project work. Ideally we envisage 8 key Irish businesses in Leeds/UK supporting us with £5,000 each. In return they will get full acknowledgment on all press releases about the project, a chance to provide their own material as well as a chance to sponsor their own exhibition board in the touring exhibition around Leeds. Ultimately they will have a lasting input to a key Irish project and a chance to record their names in Leeds Irish Heritage.

We realise we have a lot of work to do but we feel that the Irish Community in Leeds deserves this archive. It will portray the variety of experiences that emigration threw upon people from Ireland, both good and bad. It will also involve a section dedicated to 2nd/3rd generation young Irish people who are proud of their identity and want to celebrate it.

All other major Irish cities already have an archive of this type and now we have bring Leeds to the forefront of this community development.

If you cannot attend this meeting but would like more information about the Irish Community Archive please call Anna Dunne on 0113 240 1130 or alternatively email anna@lihh.org.



Sanctuary Housing have a selection
of modern, spacious 1 bed-roomed flats to let in

- Broadlea Street (Leeds LS13) and
- Foundry Mill Terrace (Leeds LS14) areas

Immediate availability.

All have central heating, double glazing, and
landscaped grounds.

For further information about these or other
properties please telephone 08457 573263



Good Homes
Quality Service

ST PATRICKS DAY EVENTS

The 4th Leeds St Patrick's Day Parade will be held in Leeds city centre on Sunday 16th March 2003.

It will start at 11:30 prompt, from St Peter's Street, rear of the Leeds College of Music and Playhouse Theatre, (next to the former site of the old Quarry Hill flats, home of many an Irish family in the 50's & 60's). The route will be the same as last year and cover New York Street, Kirkgate, Duncan Street, Briggate, The Headrow, Cookridge Street and finish in Millennium Square in front of Leeds Civic Hall. The Aughanamullan band (Co Monaghan) is travelling from Ireland, to lead the Parade. There will be Irish dancing in Briggate, with dancing and music on arrival in Millennium Square to entertain all who wish to be there.

Mass will be celebrated in St Anne's Cathedral at 1:30pm.

The committee hope that anyone who is or wants to be Irish on that day will join in and make the day an event to remember and tell future generations about.

If anyone would like any further information they can contact either:

John Smyth Chairman on 0113 2296844 or
Cinta Culkin Secretary on 0113 2774767.

POETS CORNER

In the last year 9 clients from Irish Health and Homes have passed away. In each newsletter we remember these people with affection.

Mary Baillie is our Housing Support Services Manager and she has written a poem in remembrance of these people.

Rest In Peace

Rest in peace the trees said to the leaves
Rest in peace the water roared to the ocean
Rest in peace the wind whispered to the rushing tornado
Rest, until you wake in another form.
Rest until all that is natural is changed.
Rest until all the rationality will not explain the inexplicable.

How will you cope now that the leaves have flown away,
And the ocean is empty,
And the wind has blown your soul into a realm you have not known.
He was a good man, a kind man, a funny man, now he no longer is.
Rest in peace the trees said to the leaves.

Advertising/Sponsorship

Do you have an organisation, business or service that might be of interest or use to the Irish Community?

We are currently looking for people to advertise in this magazine. It is a quarterly magazine and looks at a variety of issues and appeals to a wide audience. We are currently circulating 4000 copies throughout Leeds.

For more information about circulation and rates for advertising please call Anna Dunne on 0113 240 1130.

Leeds Irish Health and Homes would like to dedicate this publication to the memory of a client who died recently, Tom. He was a wonderful person and will be remembered with affection.

WHERE TO FIND US

LEEDS IRISH HEALTH AND HOMES
335 ROUNDHAY ROAD
LEEDS
LS8 4HT

DIRECTIONS:

On Roundhay Road we are very close to the Fforde Green Pub. It is a small office located above Binson Bearings Company so don't miss the bright red door to the left of the shop.

Please do remember that if you have any mobility problems we can organise a home visit as there are some stairs leading up to the office. For more detailed directions please call **0113 240 1130**.

All contents of this newsletter are solely the responsibility of the individuals contributing them and the management committee and staff of Leeds Irish Health & Homes disclaim responsibility for all statements not made directly by themselves and for any resulting consequences.